

Lead Inspection & Risk Assessment Report

FOR THE PROPERTY AT:

125 Ferguson Street

Lansing, MI 48912

Date of Construction: 1914



ETC Job #: 269217

Prepared For

Ingham County Land Bank

3024 Turner Street

Lansing, MI 48906

517-267-5221

Date of Inspection: 05/10/2024

Date of Report: 05/22/2024

Report Prepared and Submitted By:

David Franklin

Michigan Certification: P-09210

XRF Serial Number: 1171



TABLE OF CONTENTS

LEAD INSPECTION & RISK ASSESSMENT REPORT	1
PURPOSE OF ENVIRONMENTAL INVESTIGATION	3
KEY DEFINITIONS.....	3
LEAD TESTING	4
RESULTS & RECOMMENDATIONS.....	4
APPENDICES	23
APPENDIX A – RESIDENT INTERVIEW.....	23
APPENDIX B – SITE INFORMATION	25
APPENDIX C – LEAD: EDUCATION, TESTING, RESOURCES & LAWS	41
APPENDIX D – ALL XRF RESULTS & DEVICE USED	48
APPENDIX E – LABORATORIES USED & ORIGINAL LABORATORY ANALYSIS REPORTS	66

Purpose of Environmental Investigation

The purpose of this report is to share lead-testing results. *Please refer to Appendix C-3 for your future responsibilities as they relate to this report.* Use the “Key Definitions” below as a guide when reading the results. **Floor plan maps are provided in Appendix B-3 – use these as a guide when reading the results.** See Appendix C for information about lead hazards and abatement versus interim control options.

KEY DEFINITIONS

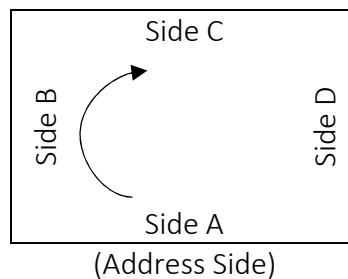
Component: The surface tested.

Examples: door, door trim, wall, ceiling, exterior siding, etc.

Substrate: The type of material.

Examples: plaster, wood, metal

Side: The location of tested area or item. Side A is always the address side of the building. Sides B, C, and D move in a clockwise direction from Side A.



Condition: The condition of the paint on the surface tested.

Intact means undamaged or in one piece.

Deteriorated means damaged, worn, or in bad shape.

Color: The color of the surface tested.

Floor: The floor of the building.

Basements identified are “Floor 0.”

Room: The room testing occurred. Rooms are identified by a number because room usage may change (i.e., a bedroom may become an office). Kitchens and bathrooms are not numbered.

Result: Indicates if the component/surface tested is Positive or Negative for lead.

Teeth: Indicates if teeth marks are present.

Fric-Imp: Friction-Impact occurs when two components rub or come into contact repeatedly.

Lead Testing

RESULTS & RECOMMENDATIONS

The table below details all of the lead-hazards found in your home.

TABLE 1: ALL LEAD-HAZARDS

COMPONENT & LOCATION OF HAZARD	SEVERITY*	PRIORITY**	ABATEMENT OPTIONS	INTERIM CONTROL OPTIONS
Hazards throughout Home				
Dust levels in some window troughs / wells within the home were found to have elevated lead levels. Therefore, all window troughs should be considered to be lead contaminated.	2	2	The risk assessor believes that these high lead levels were caused by other lead hazards dealt with below. Therefore, after having completed all other abatement / interim control options, clean the entire house for lead dust thoroughly using the accepted HEPA-Wash cleaning methods.	The risk assessor believes that these high lead levels were caused by other lead hazards dealt with below. Therefore, after having completed all other abatement / interim control options, clean the entire house for lead dust thoroughly using the accepted HEPA-Wash cleaning methods.
Dust levels on some floors within the home were found to have elevated lead levels. Therefore, all floors should be considered to be lead contaminated.	2	1	The risk assessor believes that these high lead levels were caused by other lead hazards dealt with below. Therefore, after having completed all other abatement / interim control options, clean the entire house for lead dust thoroughly using the accepted HEPA-Wash cleaning methods.	The risk assessor believes that these high lead levels were caused by other lead hazards dealt with below. Therefore, after having completed all other abatement / interim control options, clean the entire house for lead dust thoroughly using the accepted HEPA-Wash cleaning methods.

COMPONENT & LOCATION OF HAZARD	SEVERITY*	PRIORITY**	ABATEMENT OPTIONS	INTERIM CONTROL OPTIONS
Dust levels on some porch/deck floors outside the home were found to have elevated lead levels. Therefore, all exterior floors should be considered to be lead contaminated.	2	1	The risk assessor believes that these high lead levels were caused by other lead hazards dealt with below. Therefore, after having completed all other abatement / interim control options, clean the exterior floors for lead dust thoroughly using the accepted HEPA-Wash cleaning methods.	The risk assessor believes that these high lead levels were caused by other lead hazards dealt with below. Therefore, after having completed all other abatement / interim control options, clean the exterior floors for lead dust thoroughly using the accepted HEPA-Wash cleaning methods.
Exterior House # 21				
All Soffits & Fasciae represent deteriorated lead paint surface hazards.	3	3	1) Enclose by wrapping with vinyl or aluminum and seal or 2) wet scrape/sand all surfaces, make necessary repairs, stabilize surfaces and encapsulate with a Michigan approved, exterior grade encapsulant or 3) Remove and replace with new components or 4) strip surfaces bare to the substrate, make necessary repairs, stabilize surfaces, and repaint.	Wet scrape / sand all surfaces, make necessary repairs, stabilize all surfaces and repaint.
All Porch Beams, Rails, the Ceiling, Columns & the Trim as well as Side D(All) Foundation represent deteriorated lead paint surface hazards.	3	3	1) Enclose with appropriate decking material, seal all edges or 2) strip all surfaces bare to the substrate (either chemically or using mechanical wet methods), make necessary repairs and recoat.	Wet scrape / sand all surfaces, make necessary repairs, stabilize all surfaces and repaint.

COMPONENT & LOCATION OF HAZARD	SEVERITY*	PRIORITY**	ABATEMENT OPTIONS	INTERIM CONTROL OPTIONS
Side D Coal Door represents a deteriorated lead paint surface hazard.	3	3	1) Remove and replace with new components or 2) wet scrape/sand all surfaces, make necessary repairs, stabilize surfaces and encapsulate with a Michigan approved encapsulant or 3) strip all surfaces bare to the substrate (either chemically or using mechanical wet methods), make necessary repairs and recoat.	Wet scrape / sand all surfaces, make necessary repairs, stabilize all surfaces and repaint.
Sides A & D1 Door Casings represent deteriorated lead paint surface hazards.	3	3	1) Remove and replace with new door systems or 2) replace individual lead painted components or 3) strip all surfaces on both sides of the door bare to the substrate, stabilize surfaces, and repaint.	1) Refit door to eliminate friction points, wet scrape/sand all surfaces, make necessary repairs, including installation of weatherstripping or other "soft" stop material, stabilize all surfaces and repaint 2) Use friction reduction treatments (jamb liners, weatherstripping, rubber padding, tread covers, etc.) to reduce wear or 3) Wet plane all friction / impact surfaces, wet scrape all remaining surfaces, make necessary repairs, stabilize all surfaces and repaint.
Side A1 Window Casing & Sill-Stool, Side B(All) Window Casing, Sill-Stool & Mullion & Side D Basement Window Stop Ext. & Sash Ext. represent deteriorated lead paint surface hazards.	3	3	1) Remove and replace with new replacement windows or 2) replace individual lead painted components or 3) enclose all lead painted surfaces or 4) strip all surfaces bare to the substrate, make necessary repairs, stabilize surfaces, and repaint.	1) Use friction reduction treatments (jamb liners, weatherstripping, rubber padding, tread covers, etc.) to reduce wear or 2) Wet plane all friction / impact surfaces, wet scrape all remaining surfaces, make necessary repairs, stabilize all surfaces and repaint.

COMPONENT & LOCATION OF HAZARD	SEVERITY*	PRIORITY**	ABATEMENT OPTIONS	INTERIM CONTROL OPTIONS
Side C Window Casing, Sill-Stool, Sash Ext., Stop Ext., Jamb, Parting Bead & Well-Trough represent deteriorated lead paint surface hazards.	3	3	1) Remove and replace with new replacement windows or 2) replace individual lead painted components or 3) enclose all lead painted surfaces or 4) strip all surfaces bare to the substrate, make necessary repairs, stabilize surfaces, and repaint.	1) Use friction reduction treatments (jamb liners, weatherstripping, rubber padding, tread covers, etc.) to reduce wear or 2) Wet plane all friction / impact surfaces, wet scrape all remaining surfaces, make necessary repairs, stabilize all surfaces and repaint.
Exterior Garage # 20				
Sides A, B, C & D Beige & Green Walls represent deteriorated lead paint surface hazards.	3	3	1) Wrap walls with Tyvek or equivalent, apply foam insulation board, seal all seams and install a new vinyl or aluminum siding system or 2) wet scrape/sand all surfaces bare to the substrate, make necessary repairs, stabilize surfaces and encapsulate with a Michigan approved, exterior grade encapsulant or 3) Remove and replace with new components or 4) strip all surfaces bare to the substrate, make necessary repairs, stabilize surfaces, and repaint.	Wet scrape / sand all surfaces, make necessary repairs, stabilize all surfaces and repaint.
All Soffits as well as Side C(All) Corner Boards represent deteriorated lead paint surface hazards.	3	3	1) Enclose by wrapping with vinyl or aluminum and seal or 2) wet scrape/sand all surfaces, make necessary repairs, stabilize surfaces and encapsulate with a Michigan approved, exterior grade encapsulant or 3) Remove and replace with new components or 4) strip surfaces bare to the substrate, make necessary repairs, stabilize surfaces, and repaint.	Wet scrape / sand all surfaces, make necessary repairs, stabilize all surfaces and repaint.

COMPONENT & LOCATION OF HAZARD	SEVERITY*	PRIORITY**	ABATEMENT OPTIONS	INTERIM CONTROL OPTIONS
Side B Window Casing, Apron & Sash Ext. represent deteriorated lead paint surface hazards.	3	3	1) Remove and replace with new replacement windows or 2) replace individual lead painted components or 3) enclose all lead painted surfaces or 4) strip all surfaces bare to the substrate, make necessary repairs, stabilize surfaces, and repaint.	1) Use friction reduction treatments (jamb liners, weatherstripping, rubber padding, tread covers, etc.) to reduce wear or 2) Wet plane all friction / impact surfaces, wet scrape all remaining surfaces, make necessary repairs, stabilize all surfaces and repaint.
Living Room # 1				
Side A Door Stop & Threshold represent deteriorated lead paint surface hazards.	2	2	1) Remove and replace with new door systems or 2) replace individual lead painted components or 3) strip all surfaces on both sides of the door bare to the substrate, stabilize surfaces, and repaint.	1) Refit door to eliminate friction points, wet scrape/sand all surfaces, make necessary repairs, including installation of weatherstripping or other "soft" stop material, stabilize all surfaces and repaint 2) Use friction reduction treatments (jamb liners, weatherstripping, rubber padding, tread covers, etc.) to reduce wear or 3) Wet plane all friction / impact surfaces, wet scrape all remaining surfaces, make necessary repairs, stabilize all surfaces and repaint.
Side A1 Window Sash Ext., Stop Ext., Jamb, Parting Bead & Well-Trough were inaccessible due to being sealed shut. Is untested other surfaces in deteriorated condition that must be considered to be a lead paint hazards.	3	3	1) Remove and replace with new replacement windows or 2) replace individual lead painted components or 3) enclose all lead painted surfaces or 4) strip all surfaces bare to the substrate, make necessary repairs, stabilize surfaces, and repaint.	1) Use friction reduction treatments (jamb liners, weatherstripping, rubber padding, tread covers, etc.) to reduce wear or 2) Wet plane all friction / impact surfaces, wet scrape all remaining surfaces, make necessary repairs, stabilize all surfaces and repaint.

COMPONENT & LOCATION OF HAZARD	SEVERITY*	PRIORITY**	ABATEMENT OPTIONS	INTERIM CONTROL OPTIONS
Dining Room # 2				
Sides B1, B2 & B3 Window Sashes Ext., Stops Ext., Jambs, Parting Beads & Wells-Troughs were inaccessible due to being sealed shut. Is untested other surfaces in deteriorated condition that must be considered to be a lead paint hazards.	3	3	1) Remove and replace with new replacement windows or 2) replace individual lead painted components or 3) enclose all lead painted surfaces or 4) strip all surfaces bare to the substrate, make necessary repairs, stabilize surfaces, and repaint.	1) Use friction reduction treatments (jamb liners, weatherstripping, rubber padding, tread covers, etc.) to reduce wear or 2) Wet plane all friction / impact surfaces, wet scrape all remaining surfaces, make necessary repairs, stabilize all surfaces and repaint.
Kitchen # 3				
Side D Wall & the Ceiling represent deteriorated lead paint surface hazards.	3	3	1) Enclose with drywall or other suitable wallboard material or 2) wet scrape/sand all surfaces, make necessary repairs, stabilize surfaces and encapsulate with a Michigan approved encapsulant.	Wet scrape / sand all surfaces, make necessary repairs, stabilize all surfaces and repaint.
Sunroom # 4				
Side A(All) White Wood Door Casings, Stops & Jambs represent deteriorated lead paint surface hazards.	2	2	1) Remove and replace with new door systems or 2) replace individual lead painted components or 3) strip all surfaces on both sides of the door bare to the substrate, stabilize surfaces, and repaint.	1) Refit door to eliminate friction points, wet scrape/sand all surfaces, make necessary repairs, including installation of weatherstripping or other "soft" stop material, stabilize all surfaces and repaint 2) Use friction reduction treatments (jamb liners, weatherstripping, rubber padding, tread covers, etc.) to reduce wear or 3) Wet plane all friction / impact surfaces, wet scrape all remaining surfaces, make necessary repairs, stabilize all surfaces and repaint.

COMPONENT & LOCATION OF HAZARD	SEVERITY*	PRIORITY**	ABATEMENT OPTIONS	INTERIM CONTROL OPTIONS
Side A Wall & the Ceiling represent deteriorated lead paint surface hazards.	3	3	1) Enclose with drywall or other suitable wallboard material or 2) wet scrape/sand all surfaces, make necessary repairs, stabilize surfaces and encapsulate with a Michigan approved encapsulant.	Wet scrape / sand all surfaces, make necessary repairs, stabilize all surfaces and repaint.
Bathroom # 10				
Side A Door & Jamb Int. represent deteriorated lead paint surface hazards.	2	2	1) Remove and replace with new door systems or 2) replace individual lead painted components or 3) strip all surfaces on both sides of the door bare to the substrate, stabilize surfaces, and repaint.	1) Refit door to eliminate friction points, wet scrape/sand all surfaces, make necessary repairs, including installation of weatherstripping or other "soft" stop material, stabilize all surfaces and repaint 2) Use friction reduction treatments (jamb liners, weatherstripping, rubber padding, tread covers, etc.) to reduce wear or 3) Wet plane all friction / impact surfaces, wet scrape all remaining surfaces, make necessary repairs, stabilize all surfaces and repaint.
Basement Stairs # 16				
Side D(All) White Wood Door Jambs Int. represent deteriorated lead paint surface hazards.	2	2	1) Remove and replace with new door systems or 2) replace individual lead painted components or 3) strip all surfaces on both sides of the door bare to the substrate, stabilize surfaces, and repaint.	1) Refit door to eliminate friction points, wet scrape/sand all surfaces, make necessary repairs, including installation of weatherstripping or other "soft" stop material, stabilize all surfaces and repaint 2) Use friction reduction treatments (jamb liners, weatherstripping, rubber padding, tread covers, etc.) to reduce wear or 3) Wet plane all friction / impact surfaces, wet scrape all remaining surfaces, make necessary repairs, stabilize all surfaces and repaint.

COMPONENT & LOCATION OF HAZARD	SEVERITY*	PRIORITY**	ABATEMENT OPTIONS	INTERIM CONTROL OPTIONS
All Stair Stringers, Risers & Tread represent deteriorated lead paint surface hazards.	3	3	1) Remove and replace with new components or 2) wet scrape/sand all surfaces, make necessary repairs, stabilize surfaces and encapsulate with a Michigan approved encapsulant or 3) strip all surfaces bare to the substrate (either chemically or using mechanical wet methods), make necessary repairs and recoat.	Wet scrape / sand all surfaces, make necessary repairs, stabilize all surfaces and repaint.
The Ceiling represents a deteriorated lead paint surface hazard.	3	3	1) Enclose with drywall or other suitable wallboard material or 2) wet scrape/sand all surfaces, make necessary repairs, stabilize surfaces and encapsulate with a Michigan approved encapsulant.	Wet scrape / sand all surfaces, make necessary repairs, stabilize all surfaces and repaint.
Basement # 17				
Side D Window Casing & Sash Int. represent deteriorated lead paint surface hazards.	3	3	1) Remove and replace with new replacement windows or 2) replace individual lead painted components or 3) enclose all lead painted surfaces or 4) strip all surfaces bare to the substrate, make necessary repairs, stabilize surfaces, and repaint.	1) Use friction reduction treatments (jamb liners, weatherstripping, rubber padding, tread covers, etc.) to reduce wear or 2) Wet plane all friction / impact surfaces, wet scrape all remaining surfaces, make necessary repairs, stabilize all surfaces and repaint.
Side B1 Window Sash Ext., Stop Ext., Jamb, Parting Bead & Well-Trough as well as Side D1 Window Jamb & Well-Trough were inaccessible due to being sealed shut. Is untested other surfaces in deteriorated condition that must be considered to be a lead paint hazards.	3	3	1) Remove and replace with new replacement windows or 2) replace individual lead painted components or 3) enclose all lead painted surfaces or 4) strip all surfaces bare to the substrate, make necessary repairs, stabilize surfaces, and repaint.	1) Use friction reduction treatments (jamb liners, weatherstripping, rubber padding, tread covers, etc.) to reduce wear or 2) Wet plane all friction / impact surfaces, wet scrape all remaining surfaces, make necessary repairs, stabilize all surfaces and repaint.

COMPONENT & LOCATION OF HAZARD	SEVERITY*	PRIORITY**	ABATEMENT OPTIONS	INTERIM CONTROL OPTIONS
Utility # 18				
Side B1 Window Sash Ext., Stop Ext., Jamb, Parting Bead & Well-Trough were inaccessible due to being sealed shut. Is untested other surfaces in deteriorated condition that must be considered to be a lead paint hazards.	3	3	1) Remove and replace with new replacement windows or 2) replace individual lead painted components or 3) enclose all lead painted surfaces or 4) strip all surfaces bare to the substrate, make necessary repairs, stabilize surfaces, and repaint.	1) Use friction reduction treatments (jamb liners, weatherstripping, rubber padding, tread covers, etc.) to reduce wear or 2) Wet plane all friction / impact surfaces, wet scrape all remaining surfaces, make necessary repairs, stabilize all surfaces and repaint.
Interior Garage # 19				
Side B Window Sash Int., Casing, Sill-Stool & Stop Int. were inaccessible due to being locked. Is untested other surfaces in deteriorated condition that must be considered to be a lead paint hazards.	3	3	1) Remove and replace with new replacement windows or 2) replace individual lead painted components or 3) enclose all lead painted surfaces or 4) strip all surfaces bare to the substrate, make necessary repairs, stabilize surfaces, and repaint.	1) Use friction reduction treatments (jamb liners, weatherstripping, rubber padding, tread covers, etc.) to reduce wear or 2) Wet plane all friction / impact surfaces, wet scrape all remaining surfaces, make necessary repairs, stabilize all surfaces and repaint.
Entire Home				
<u>After having completed all other abatement and interim control options.</u>	NA	NA	After completing all abatement and interim control options clean the entire home for lead dust thoroughly using the accepted HEPA-Wash cleaning methods.	After completing all abatement and interim control options clean the entire home for lead dust thoroughly using the accepted HEPA-Wash cleaning methods.

* Severity: 1 = most severe; 2 = very severe; 3 = somewhat severe

**Priority: 1 = high priority; 2 = medium priority; 3 = low priority

RESULTS OF TESTED SURFACES

The following tables detail levels of lead found in paint, dust, and soil on your property.

Positive Lead-Paint Results

All paint testing results in Appendix D.

TABLE 2: POSITIVE LEAD-PAINT RESULTS

READING #	MG/CM ²	RESULT	COMPONENTS	SIDE	SIDE #	COLOR	CONDITION	SUBSTRATE	ROOM TYPE	ROOM #	COND CAUSE	FRIC-IMP	TEETH
7	19	Positive	Door Stop	A	-	White	Deteriorated	Wood	Living Room	1	Impact	Yes	No
8	1.7	Positive	Door Threshold	A	-	White	Deteriorated	Wood	Living Room	1	Friction	Yes	No
72	11.1	Positive	Wall	C	-	Blue	INTACT	Plaster	Kitchen	3	-	-	-
73	10.9	Positive	Wall	D	-	Blue	Deteriorated	Plaster	Kitchen	3	Moisture	No	No
74	9.2	Positive	Ceiling	Ceiling	-	White	Deteriorated	Plaster	Kitchen	3	Moisture	No	No
77	14.6	Positive	Door Casing	A	(All)	White	Deteriorated	Wood	Sun Room	4	Impact	Yes	No
78	14	Positive	Door Stop	A	(All)	White	Deteriorated	Wood	Sun Room	4	Impact	Yes	No
79	18	Positive	Door Jamb	A	(All)	White	Deteriorated	Wood	Sun Room	4	Friction	Yes	No
87	14.5	Positive	Wall	A	-	Green	Deteriorated	Wood	Sun Room	4	Moisture	No	No
91	13.4	Positive	Ceiling	Ceiling	-	White	Deteriorated	Wood	Sun Room	4	Moisture	No	No
92	1.7	Positive	Crown Molding	Ceiling	-	White	INTACT	Wood	Sun Room	4	-	-	-
93	1	Positive	Crown Molding	Ceiling	-	White	INTACT	Wood	Sun Room	4	-	-	-
101	11.5	Positive	Door Casing	D	(All)	Purple	INTACT	Wood	Base. Stair	16	-	-	-
102	2.7	Positive	Door Stop	D	(All)	Green	INTACT	Wood	Base. Stair	16	-	-	-
103	11.9	Positive	Door Jamb Int.	D	(All)	Green	Deteriorated	Wood	Base. Stair	16	Friction	Yes	No
105	7.8	Positive	Wall	D	-	Purple	INTACT	Plaster	Base. Stair	16	-	-	-
106	7.9	Positive	Wall	B	-	Purple	INTACT	Plaster	Base. Stair	16	-	-	-
107	7.7	Positive	Ceiling	Ceiling	-	White	Deteriorated	Plaster	Base. Stair	16	Moisture	No	No
110	8.5	Positive	Wall Casing	D	-	Purple	INTACT	Wood	Base. Stair	16	-	-	-

READING #	MG/CM ²	RESULT	COMPONENTS	SIDE	SIDE #	COLOR	CONDITION	SUBSTRATE	ROOM TYPE	ROOM #	COND CAUSE	FRIC-IMP	TEETH
112	5	Positive	Stair Stringer	All	(All)	Purple	Deteriorated	Wood	Base. Stair	16	Impact	Yes	No
113	3.2	Positive	Stair Stringer	All	(All)	Green	Deteriorated	Wood	Base. Stair	16	Impact	Yes	No
114	1.2	Positive	Stair Tread	All	(All)	Green	Deteriorated	Wood	Base. Stair	16	Friction	Yes	No
115	8.6	Positive	Stair Riser	All	(All)	Green	Deteriorated	Wood	Base. Stair	16	Impact	Yes	No
125	9.7	Positive	Win. Casing	D	-	White	Deteriorated	Wood	Basement	17	Impact	Yes	No
126	6.1	Positive	Win. Sash Int.	D	-	White	Deteriorated	Wood	Basement	17	Friction	Yes	No
226	1.8	Positive	Door Jamb Int.	A	-	White	Deteriorated	Wood	Bathroom	10	Friction	Yes	No
228	1.7	Positive	Door	A	-	White	Deteriorated	Wood	Bathroom	10	Friction	Yes	No
229	1.8	Positive	Win. Casing	C	-	White	INTACT	Wood	Bathroom	10	-	-	-
232	2.8	Positive	Win. Apron	C	-	White	INTACT	Wood	Bathroom	10	-	-	-
241	2.9	Positive	Baseboard	C	(All)	White	INTACT	Wood	Bathroom	10	-	-	-
276	19.5	Positive	Wall	A	-	Beige	Deteriorated	Wood	Ext. Garage	20	Weather	No	No
277	4.1	Positive	Wall	B	-	Green	Deteriorated	Wood	Ext. Garage	20	Weather	No	No
278	9.6	Positive	Wall	C	-	Green	Deteriorated	Wood	Ext. Garage	20	Weather	No	No
279	1.6	Positive	Wall	D	-	Green	Deteriorated	Wood	Ext. Garage	20	Weather	No	No
280	13.1	Positive	Soffit	All	(All)	Beige	Deteriorated	Wood	Ext. Garage	20	Weather	No	No
282	15.8	Positive	Corner Board	C	(All)	Beige	Deteriorated	Wood	Ext. Garage	20	Weather	Yes	No
284	8.8	Positive	Win. Casing	B	-	Beige	Deteriorated	Wood	Ext. Garage	20	Weather	No	No
285	1.8	Positive	Win. Sash Ext.	B	-	Beige	Deteriorated	Wood	Ext. Garage	20	Weather	Yes	No
286	4.4	Positive	Win. Apron	B	-	Beige	Deteriorated	Wood	Ext. Garage	20	Weather	No	No
287	12	Positive	Win. Casing	C	-	Beige	Deteriorated	Wood	Exterior House	21	Weather	No	No
288	13.8	Positive	Win. Sill-Stool	C	-	Beige	Deteriorated	Wood	Exterior House	21	Weather	Yes	No
289	14.6	Positive	Win. Sash Ext.	C	-	Beige	Deteriorated	Wood	Exterior House	21	Weather	Yes	No
290	15.2	Positive	Win. Stop Ext.	C	-	Beige	Deteriorated	Wood	Exterior House	21	Weather	Yes	No
291	17.7	Positive	Win. Jamb	C	-	Beige	Deteriorated	Wood	Exterior House	21	Weather	Yes	No

READING #	MG/CM ²	RESULT	COMPONENTS	SIDE	SIDE #	COLOR	CONDITION	SUBSTRATE	ROOM TYPE	ROOM #	COND CAUSE	FRIC-IMP	TEETH
292	14.5	Positive	Win. Part Bead	C	-	Beige	Deteriorated	Wood	Exterior House	21	Weather	Yes	No
293	14.2	Positive	Win. Well-Trough	C	-	Beige	Deteriorated	Wood	Exterior House	21	Weather	Yes	No
300	7.8	Positive	Door Casing	D	1	Beige	Deteriorated	Wood	Exterior House	21	Weather	No	No
301	6.3	Positive	Door Casing	A	-	Beige	Deteriorated	Wood	Exterior House	21	Weather	No	No
302	6.6	Positive	Win. Casing	A	1	Beige	Deteriorated	Wood	Exterior House	21	Weather	No	No
303	6	Positive	Win. Sill-Stool	A	1	Beige	Deteriorated	Wood	Exterior House	21	Weather	Yes	No
305	1.8	Positive	Porch Beam	All	(All)	Beige	Deteriorated	Wood	Exterior House	21	Weather	No	No
306	1.1	Positive	Porch Rail	All	(All)	Beige	Deteriorated	Wood	Exterior House	21	Friction	Yes	No
307	7.5	Positive	Porch Ceiling	All	(All)	Beige	Deteriorated	Wood	Exterior House	21	Weather	No	No
308	3.2	Positive	Porch Column	All	(All)	Brown	Deteriorated	Wood	Exterior House	21	Weather	Yes	No
309	8.1	Positive	Porch Trim	All	(All)	Green	Deteriorated	Wood	Exterior House	21	Weather	No	No
310	13.4	Positive	Porch Foundation	D	(All)	Beige	Deteriorated	Wood	Exterior House	21	Weather	Yes	No
315	1.5	Positive	Wall	C	-	Green	INTACT	Transite	Exterior House	21	-	-	-
316	2	Positive	Wall	B	-	Green	INTACT	Transite	Exterior House	21	-	-	-
317	2.1	Positive	Wall	D	-	Green	INTACT	Transite	Exterior House	21	-	-	-
318	2.1	Positive	Wall	A	-	Green	INTACT	Transite	Exterior House	21	-	-	-
319	1	Positive	Coal Door	D	-	Green	Deteriorated	Metal	Exterior House	21	Weather	Yes	No
320	14.8	Positive	Win. Casing	B	(All)	Beige	Deteriorated	Wood	Exterior House	21	Weather	No	No
321	19.2	Positive	Win. Sill-Stool	B	(All)	Beige	Deteriorated	Wood	Exterior House	21	Weather	Yes	No
322	15.4	Positive	Win. Mullion	B	(All)	Beige	Deteriorated	Wood	Exterior House	21	Weather	No	No
324	6.9	Positive	Soffit	All	(All)	Beige	Deteriorated	Wood	Exterior House	21	Weather	No	No
325	7.3	Positive	Fascia	All	(All)	Beige	Deteriorated	Wood	Exterior House	21	Weather	No	No
326	17	Positive	Win. Stop Ext.	D	-	Green	Deteriorated	Wood	Exterior House	21	Weather	Yes	No
328	3	Positive	Win. Sash Ext.	D	-	Green	Deteriorated	Wood	Exterior House	21	Weather	Yes	No
A1	ASSUMED	Positive	Win. Sash Ext.	A	1	White	Deteriorated	Wood	Living Room	1	Weather	Yes	No

READING #	MG/CM ²	RESULT	COMPONENTS	SIDE	SIDE #	COLOR	CONDITION	SUBSTRATE	ROOM TYPE	ROOM #	COND CAUSE	FRIC-IMP	TEETH
A2	ASSUMED	Positive	Win. Stop Ext.	A	1	White	Deteriorated	Wood	Living Room	1	Weather	Yes	No
A3	ASSUMED	Positive	Win. Jamb	A	1	White	Deteriorated	Wood	Living Room	1	Friction	Yes	No
A4	ASSUMED	Positive	Win. Part Bead	A	1	White	Deteriorated	Wood	Living Room	1	Friction	Yes	No
A5	ASSUMED	Positive	Win. Well-Trough	A	1	White	Deteriorated	Wood	Living Room	1	Weather	Yes	No
A6	ASSUMED	Positive	Win. Sash Ext.	B	1	White	Deteriorated	Wood	Dining Room	2	Weather	Yes	No
A7	ASSUMED	Positive	Win. Stop Ext.	B	1	White	Deteriorated	Wood	Dining Room	2	Weather	Yes	No
A8	ASSUMED	Positive	Win. Jamb	B	1	White	Deteriorated	Wood	Dining Room	2	Friction	Yes	No
A9	ASSUMED	Positive	Win. Part Bead	B	1	White	Deteriorated	Wood	Dining Room	2	Friction	Yes	No
A10	ASSUMED	Positive	Win. Well-Trough	B	1	White	Deteriorated	Wood	Dining Room	2	Weather	Yes	No
A11	ASSUMED	Positive	Win. Sash Ext.	B	2	White	Deteriorated	Wood	Dining Room	2	Weather	Yes	No
A12	ASSUMED	Positive	Win. Stop Ext.	B	2	White	Deteriorated	Wood	Dining Room	2	Weather	Yes	No
A13	ASSUMED	Positive	Win. Jamb	B	2	White	Deteriorated	Wood	Dining Room	2	Friction	Yes	No
A14	ASSUMED	Positive	Win. Part Bead	B	2	White	Deteriorated	Wood	Dining Room	2	Friction	Yes	No
A15	ASSUMED	Positive	Win. Well-Trough	B	2	White	Deteriorated	Wood	Dining Room	2	Weather	Yes	No
A16	ASSUMED	Positive	Win. Sash Ext.	B	3	White	Deteriorated	Wood	Dining Room	2	Weather	Yes	No
A17	ASSUMED	Positive	Win. Stop Ext.	B	3	White	Deteriorated	Wood	Dining Room	2	Weather	Yes	No
A18	ASSUMED	Positive	Win. Jamb	B	3	White	Deteriorated	Wood	Dining Room	2	Friction	Yes	No
A19	ASSUMED	Positive	Win. Part Bead	B	3	White	Deteriorated	Wood	Dining Room	2	Friction	Yes	No
A20	ASSUMED	Positive	Win. Well-Trough	B	3	White	Deteriorated	Wood	Dining Room	2	Weather	Yes	No
A21	ASSUMED	Positive	Win. Sash Ext.	B	1	White	Deteriorated	Wood	Basement	17	Weather	Yes	No
A22	ASSUMED	Positive	Win. Stop Ext.	B	1	White	Deteriorated	Wood	Basement	17	Weather	Yes	No
A23	ASSUMED	Positive	Win. Jamb	B	1	White	Deteriorated	Wood	Basement	17	Friction	Yes	No
A24	ASSUMED	Positive	Win. Part Bead	B	1	White	Deteriorated	Wood	Basement	17	Friction	Yes	No
A25	ASSUMED	Positive	Win. Well-Trough	B	1	White	Deteriorated	Wood	Basement	17	Weather	Yes	No
A26	ASSUMED	Positive	Win. Jamb	D	1	White	Deteriorated	Wood	Basement	17	Friction	Yes	No

READING #	MG/CM ²	RESULT	COMPONENTS	SIDE	SIDE #	COLOR	CONDITION	SUBSTRATE	ROOM TYPE	ROOM #	COND CAUSE	FRIC-IMP	TEETH
A27	ASSUMED	Positive	Win. Well-Trough	D	1	White	Deteriorated	Wood	Basement	17	Weather	Yes	No
A28	ASSUMED	Positive	Win. Sash Ext.	B	1	White	Deteriorated	Wood	Utility Room	18	Weather	Yes	No
A29	ASSUMED	Positive	Win. Stop Ext.	B	1	White	Deteriorated	Wood	Utility Room	18	Weather	Yes	No
A30	ASSUMED	Positive	Win. Jamb	B	1	White	Deteriorated	Wood	Utility Room	18	Friction	Yes	No
A31	ASSUMED	Positive	Win. Part Bead	B	1	White	Deteriorated	Wood	Utility Room	18	Friction	Yes	No
A32	ASSUMED	Positive	Win. Well-Trough	B	1	White	Deteriorated	Wood	Utility Room	18	Weather	Yes	No
A33	ASSUMED	Positive	Win. Casing	B	1	Green	Deteriorated	Wood	Int. Garage	19	Impact	Yes	No
A34	ASSUMED	Positive	Win. Sill-Stool	B	1	Green	Deteriorated	Wood	Int. Garage	19	Impact	Yes	No
A35	ASSUMED	Positive	Win. Stop Int.	B	1	Green	Deteriorated	Wood	Int. Garage	19	Impact	Yes	No
A36	ASSUMED	Positive	Win. Sash Int.	B	1	Green	Deteriorated	Wood	Int. Garage	19	Friction	Yes	No

HUD reporting limits for positive XRF results are $\geq 1.0 \text{ mg/cm}^2$ (milligrams per square centimeter) for painted or glazed surfaces.

Dust Wipe Sample Results

TABLE 3: DUST WIPE SAMPLE RESULTS

SAMPLE #	ROOM/WIPE LOCATION	SURFACE TESTED		LEAD HAZARD?	LAB RESULT (µG/FT ²)
		HF	CF		
FB1	Field Blank			No	N/D
DW01	Living Room 1	HF		Yes	26.8
DW02	Living Room 1 Side D1		T	No	73.5
DW03	Dining Room 2	HF		Yes	37.3
DW04	Dining Room 2 Side B1		S	No	67.2
DW05	Kitchen 3	HF		Yes	79.4
DW06	Kitchen 3 Side D1		T	Yes	400
DW07	Bedroom 7		CF	No	<5.00
DW08	Bedroom 7 Side A1		S	No	34.4
DW09	Bedroom 8		CF	No	<5.00
DW10	Bedroom 8 Side A1		S	No	27.6
DW11	Bedroom 8 Side A1		T	Yes	482
DW12	Bedroom 9		CF	Yes	30.7
DW13	Bedroom 9 Side C1		S	No	75.8
DW14	Porch Side A		HF	Yes	171

For all HUD/Medicaid projects lead action levels for dust: Floors = 10 µg/ft² (micrograms per square feet); Porches = 40 µg/ft²; Window stools/interior sills = 100 µg/ft²; Window troughs = 100 µg/ft². BRL = Below Reporting Limits. N/D = Not Detected.

Soil Sample Results

TABLE 4: SOIL SAMPLE RESULTS

SAMPLE #	LOCATION OF BARE SOIL AREA	APPROXIMATE AREA IN SQUARE- FEET (FT ²)	LEAD HAZARD?	LAB RESULT IN PARTS PER MILLION (PPM)
SS-1	House Dripline Side A	45	No	1040
SS-2	House Dripline Side B	90	No	504
SS-3	House Dripline Side C	30	No	277
SS-4	Garage Dripline	45	No	784

EPA and HUD lead action levels: Soil – at 1,200 ppm; Child play areas and gardens – at 400 ppm or more. BRL = Below Reporting Limits. N/D = Not Detected.

Other Surface Sample Results

The table below details all non-painted surfaces that were tested. Testing these surfaces can help find other sources of lead-exposure. These surfaces are not required to be tested.

TABLE 5: OTHER SURFACE SAMPLE RESULTS

SURFACE/ITEM DESCRIPTION	LOCATION	MATERIAL	RESULT (MG/CM ²)
N/A	N/A	N/A	N/A

Items listed above were tested using an XRF. The results are limited because the surfaces tested do not comply with the devices testing ability. **Positive lead results are in bold.** These items may be a potential source of lead exposure. [mg/cm² = milligrams per square centimeter]

SURFACES UNABLE TO BE TESTED

A lead investigation requires testing all painted surfaces. Some painted surfaces in your home may be out of reach. These surfaces are not tested. Surfaces out of reach that are not tested are assumed to contain lead-based paint. If the paint looks deteriorated, the surface is assumed to be a lead-based paint hazard. The table below details all of the untested painted surfaces. It also details why the surface was not tested.

TABLE 6: SURFACES UNABLE TO TEST

ROOM	COMPONENT	REASON NOT TESTED
Living Room 1 – (Side A1)	Window Sash Ext. Stop Ext., Jamb, Parting Bead & Well-Trough	Sealed shut
Dining Room 2 – (Sides B1, B2 & B3)	Window Sashes Ext. Stops Ext., Jambs, Parting Beads & Wells-Troughs	Sealed shut
Basement 17 – (Side B1)	Window Sash Ext. Stop Ext., Jamb, Parting Bead & Well-Trough	Sealed shut
Basement 17 – (Side D1)	Window Jamb & Well-Trough	Sealed shut
Utility 18 – (Side B1)	Window Sash Ext. Stop Ext., Jamb, Parting Bead & Well-Trough	Sealed shut
Interior Garage 19 – (Side B1)	Window Casing, Sill-Stool, Stop Int. & Sash Int.	Locked door
Interior Garage 19 – (Whole Room)	All Components	Locked door

HUD reporting limits for positive XRF results are ≥ 1.0 mg/cm² (milligrams per square centimeter) for painted or glazed surface.

POTENTIAL HAZARDS

Lead can exist in your home and not be a hazard. The table below details all surfaces found to contain lead but are not current hazards. Please make a note of these surfaces and remember to monitor them for changes. Any changes could make the surface a lead-hazard, which will alter severity and priority levels and require lead hazard control options. Refer to Appendix C-3 for ways to monitor.

TABLE 7: POTENTIAL HAZARDS

READING #	MG/CM ²	RESULT	COMPONENTS	SIDE	SIDE #	COLOR	CONDITION	SUBSTRATE	ROOM TYPE	ROOM #	COND CAUSE	FRIC-IMP	TEETH
72	11.1	Positive	Wall	C	-	Blue	INTACT	Plaster	Kitchen	3	-	-	-
92	1.7	Positive	Crown Molding	Ceiling	-	White	INTACT	Wood	Sun Room	4	-	-	-
93	1	Positive	Crown Molding	Ceiling	-	White	INTACT	Wood	Sun Room	4	-	-	-
101	11.5	Positive	Door Casing	D	(All)	Purple	INTACT	Wood	Base. Stair	16	-	-	-
102	2.7	Positive	Door Stop	D	(All)	Green	INTACT	Wood	Base. Stair	16	-	-	-
105	7.8	Positive	Wall	D	-	Purple	INTACT	Plaster	Base. Stair	16	-	-	-
106	7.9	Positive	Wall	B	-	Purple	INTACT	Plaster	Base. Stair	16	-	-	-
110	8.5	Positive	Wall Casing	D	-	Purple	INTACT	Wood	Base. Stair	16	-	-	-
229	1.8	Positive	Win. Casing	C	-	White	INTACT	Wood	Bathroom	10	-	-	-
232	2.8	Positive	Win. Apron	C	-	White	INTACT	Wood	Bathroom	10	-	-	-
241	2.9	Positive	Baseboard	C	(All)	White	INTACT	Wood	Bathroom	10	-	-	-
315	1.5	Positive	Wall	C	-	Green	INTACT	Transite	Exterior House	21	-	-	-
316	2	Positive	Wall	B	-	Green	INTACT	Transite	Exterior House	21	-	-	-
317	2.1	Positive	Wall	D	-	Green	INTACT	Transite	Exterior House	21	-	-	-
318	2.1	Positive	Wall	A	-	Green	INTACT	Transite	Exterior House	21	-	-	-

HUD reporting limits for positive XRF results are ≥ 1.0 mg/cm² (milligrams per square centimeter) for painted or glazed surfaces.

Inspector Certification

The information contained in this report is a true and accurate representation of the conditions and activities at this property at the time of this investigation, based on the professional judgment of the person(s) who conducted and reported this Environmental Investigation. If soil samples were not collected as indicated in Table 4 due to snow, these samples will be collected at the earliest opportunity. An amended report will be sent with any soil hazards found and corrective action options.



David Franklin

Michigan Certified Lead Inspector/Risk Assessor: P-09210

Risk Assessor E-Mail: David.Franklin@2etc.com

Appendices

APPENDIX A – RESIDENT INTERVIEW

The purpose of this interview is to help find where to take dust and soil samples. Questions will help find:

- Most frequently used entrances and windows.
- Areas where children sleep, eat, and play.
- Recent renovations.
- Etc.

Resident Interview Questions & Responses:

This house is currently: Not Occupied

Person interviewed: N/A

Relationship to child: N/A

FAMILY USE PATTERNS	
QUESTION	RESPONSE
Which entrances are used most frequently?	N/A
Are there floor mats at entrances to the home?	No
Do occupants take shoes off at the door?	N/A
Which windows are opened most frequently?	N/A
Is there a window fan that is used during summer months?	N/A
Are window air conditioners used?	N/A
I need to dust test the window sill in this room for lead. When was the last time it was wiped down?	N/A
Does your family eat food grown in a garden?	N/A
Does your child play in this garden?	N/A
What cleaning methods do you use at home?	N/A

OTHER HOUSEHOLD RISK FACTORS	
QUESTION	RESPONSE
Do you have a dog, cat, or other pet that could track soil or dust inside?	N/A
Does your child have access to any of the following?	
<input type="checkbox"/> Industrial (big) crayons or markers	
<input type="checkbox"/> Paints	N/A
<input type="checkbox"/> Dyes	
<input type="checkbox"/> Coloring pigments	
<input type="checkbox"/> Putty	
<input type="checkbox"/> Detergents	
<input type="checkbox"/> Batteries	
<input type="checkbox"/> Gear oil	
<input type="checkbox"/> Pipe sealants	
<input type="checkbox"/> Shellacs	
<input type="checkbox"/> Lacquers	
<input type="checkbox"/> Epoxy resins	
<input type="checkbox"/> Pesticides	

FREQUENT AREAS CHILD VISITS

QUESTION			RESPONSE
Is your child cared for away from home?			N/A
Child Name	Type of Care	Location of Care/Address	Number of Hours/Weeks at Location
N/A	N/A	N/A	N/A

Where does your child like to sleep, eat, and play?

Child	Age	Bedrooms	Eats	Plays Indoors	Plays Outdoors
N/A	N/A	N/A	N/A	N/A	N/A

ELEVATED BLOOD LEAD LEVEL INFORMATION

QUESTION					RESPONSE
Do any of the above children have a known elevated blood lead level test?					N/A
Child	Test Results (µg/dL)	Venous (V) or Capillary (C)	Date of Tests	Notes	
N/A	N/A	N/A	N/A	N/A	

CHILD BEHAVIOR RISK FACTORS

QUESTION	RESPONSE
Does your child suck his/her fingers or thumb?	N/A
Does your child put painted objects into their mouth?	N/A
Are there any areas of peeling paint on walls, ceilings, stairs, woodwork, furniture or toys?	N/A
Does your child chew on painted surfaces, such as painted cribs, window sills, furniture edges, railings, door moldings, or broom handles?	N/A
Are there bite marks found anywhere in the home, such as child's crib, furniture or window sills?	N/A
Does your child chew or eat paint chips or pick at painted surfaces?	N/A
Does your child put soft metal objects in the mouth? (Ex: pewter, metal toy soldiers, jewelry, gunshot, bullets, beads, fishing sinkers, electronics)	N/A
Does your child put printed material (newspapers, magazines) in their mouth?	N/A
Does your child eat without washing hands before meals or snacks?	N/A
When was the last time the toys were washed?	N/A
Pacifiers?	N/A
Are there bare soil areas where the child likes to play?	N/A
On a typical week this past summer, how much time did your child play outside in your yard?	N/A
Has the child been seen eating soil?	N/A

APPENDIX B – SITE INFORMATION

B-1: General Property Description:

The overall condition of the house is fair. The house exterior is transite sided and the exterior trim is exposed. The windows in the house are vinyl and wood and the basement windows are wood. There are fixed non opening windows in Bedroom 13. The entry doors are wood pre hung. The cabinets in Kitchen 3 are prefabricated and there are ceiling tiles in Kitchen 3. The exterior porches/decks are pressure treated lumber. The garage is not attached to the house. The detached garage interior was not tested because it was locked. The exterior of the garage is wood sided. The garage windows are wood and fixed. There are no garage entry doors and the overhead doors are factory steel.

B-2: Building Condition

Exposure to lead is usually from lead-based paint. Lead-based paint becomes a source of lead exposure when the paint is deteriorated. Deteriorated paint is paint that is chipping or chalking, and may be caused by poor building conditions. A leaky roof is an example of a poor building condition that can cause paint to become deteriorated. Lead work cannot begin before building conditions causing paint to deteriorate are fixed. The building condition survey helps find these areas. “Yes” responses mean the building condition is poor and needs fixing.

BUILDING CONDITION SURVEY QUESTIONS & RESPONSES

GENERAL PROPERTY CONDITION	
QUESTION	RESPONSE
What year was this building built?	1914
Has there been any lead testing done to this property within the last year?	N/A
Were any external renovations done on a neighboring property? Repainting, remodeling, renovation, window replacement, sanding, scraping or power washing painted surfaces inside or outside of the home?	N/A
Have nearby buildings or structures (bridge, water tower, homes, etc.) recently been repainted, demolished or burned?	N/A
Were any home renovations done to your home within the past year?	N/A
Are you planning any building renovations?	N/A
Are you or the landlord planning any landscaping activities?	N/A
Is building debris stored in the yard?	No
Other notable conditions:	No

EXTERIOR BUILDING CONDITION

QUESTION	RESPONSE
Is exterior siding missing components?	No
Is the roof missing parts?	No
Does the roof have holes or large cracks?	No
Are gutters or downspouts broken?	Yes Downspout on Side C
Are there two or more windows or doors missing, broken or boarded up?	No
Does the porch or steps have major cracks, missing materials, structural leans, or is it visibly unsound?	Yes Porch Stairs falling off on Side A
Do exterior walls have large cracks, or damage requiring more than routine painting?	No
Does the foundation have damage, structural leans or is it visibly unsound?	No
Are chimney blocks or masonry joints cracked, with loose or missing components, out of plumb or otherwise deteriorated?	No
Other notable conditions:	Unknown if garage is part of this property or neighbors

INTERIOR BUILDING CONDITION

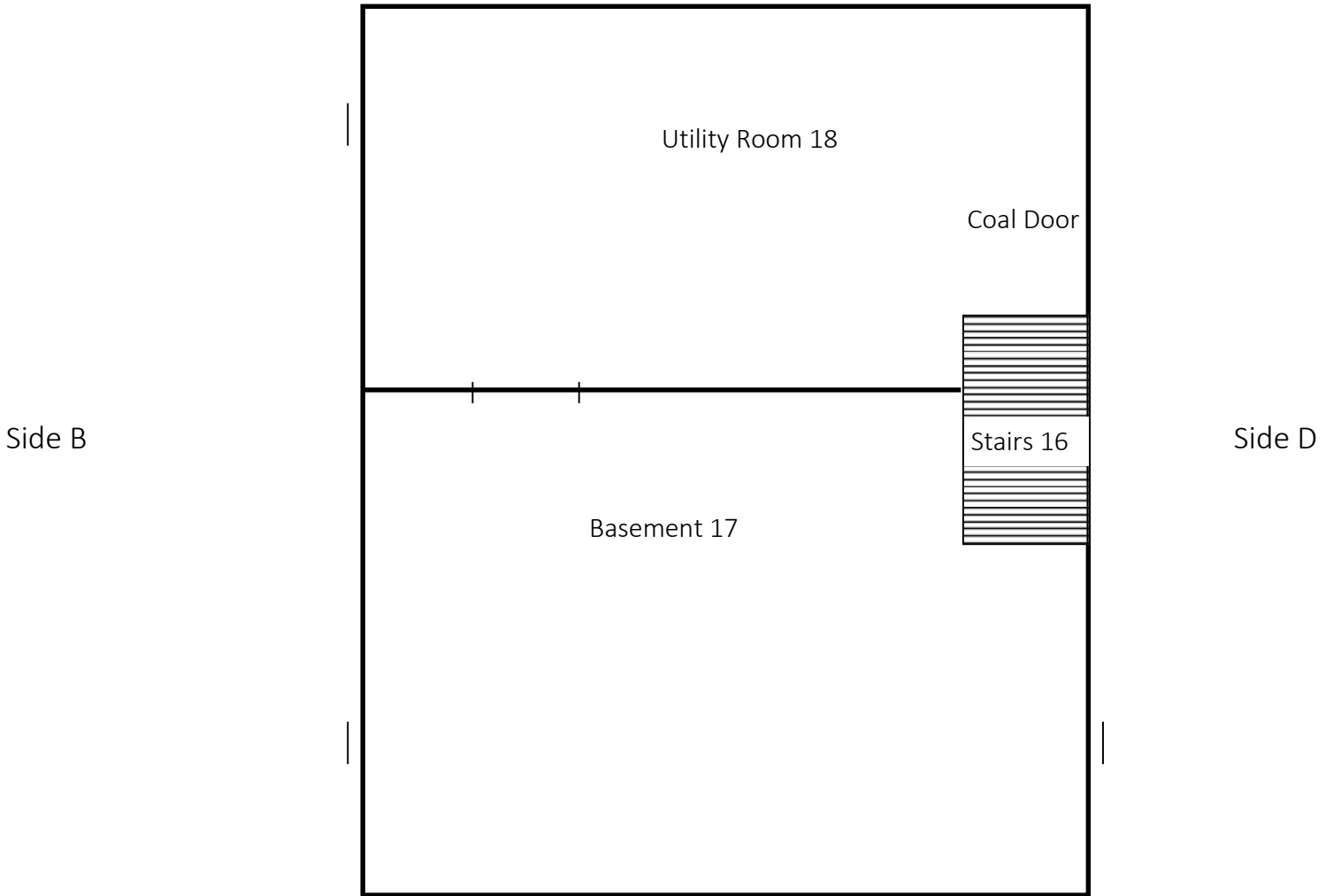
QUESTION	RESPONSE
Has there been any recent water damage in the home?	N/A
Are there water stains on interior walls or ceilings?	No
Are plaster walls or ceilings deteriorated?	Yes Kitchen 3
Do interior walls have large cracks, or damage requiring more than routine painting?	Yes All Bedrooms & Bathroom 10
Is there any deteriorated paint in the home?	Yes
Are vinyl mini blinds present?	No
*Is the bathtub deteriorated?	No
Does the child bathe in it?	N/A
<i>*Follow MDHHS Residential Lead Hazard Control-Lead in Water Protocol</i>	
Other notable conditions:	No

B-3: Floor Plans

Side C

INTERIOR BASEMENT

*All windows are wood.



Window types:

WD = Wood **V** = Vinyl **AL** = Aluminum **M** = Metal **GB** = Glass block
ST = Steel **F** = Fixed **BU** = Boarded-up **W#** = Window Number
BW# = Basement Window Number

Dust wipe sample:

HF = Hard Floor, **CF** = Carpeted Floor
S = Window Sill, **T** = Window Trough, **EPF** = Exterior Porch Floor

Soil samples: **SS-1, SS-2, SS-3, etc.**

Water samples:

BF = Bathroom Faucet, **KF**=Kitchen Faucet, **EF**=Exterior Faucet,
BTF=Bathroom Tub Faucet, **LF**=Laundry Faucet, **RF**=Refrigerator Faucet
WH = Water Heater **WM** = Water meter

CL=Closet

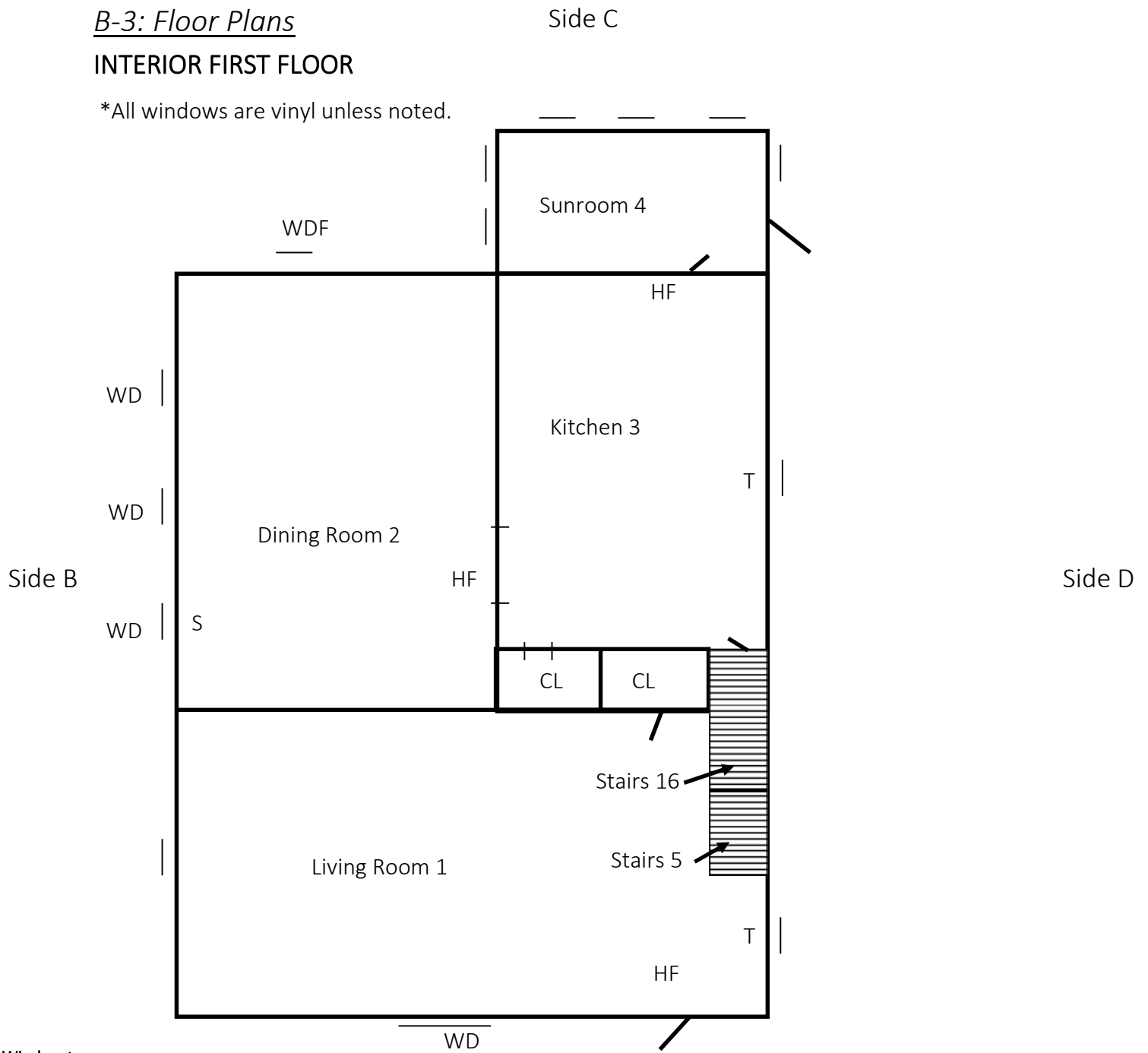
Side A



B-3: Floor Plans

INTERIOR FIRST FLOOR

*All windows are vinyl unless noted.



Window types:

WD = Wood V = Vinyl AL = Aluminum M = Metal GB = Glass block
 ST = Steel F = Fixed BU = Boarded-up W# = Window Number
 BW# = Basement Window Number

Dust wipe sample:

HF = Hard Floor, CF = Carpeted Floor
 S = Window Sill, T = Window Trough, EPF = Exterior Porch Floor

Soil samples: SS-1, SS-2, SS-3, etc.

Water samples:

BF = Bathroom Faucet, KF=Kitchen Faucet, EF=Exterior Faucet,
 BTF=Bathroom Tub Faucet, LF=Laundry Faucet, RF=Refrigerator Faucet
 WH = Water Heater WM = Water meter

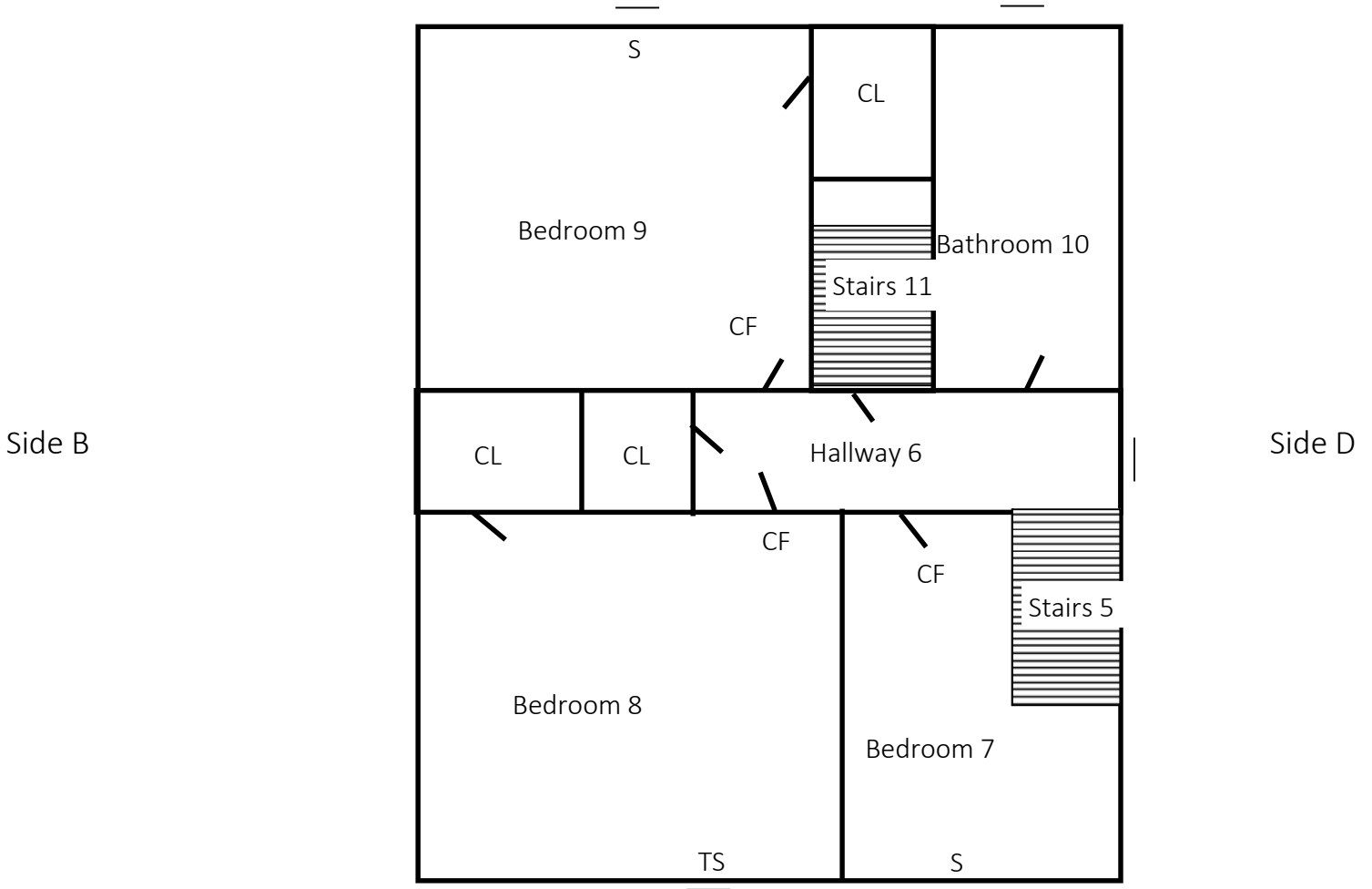
CL=Closet

B-3: Floor Plans

Side C

INTERIOR SECOND FLOOR

*All windows are vinyl.



Window types:

WD = Wood V = Vinyl AL = Aluminum M = Metal GB = Glass block
ST = Steel F = Fixed BU = Boarded-up W# = Window Number BW# = Basement Window Number

Dust wipe sample:

HF = Hard Floor, CF = Carpeted Floor
S = Window Sill, T = Window Trough, EPF = Exterior Porch Floor

Soil samples: SS-1, SS-2, SS-3, etc.

Water samples:

BF = Bathroom Faucet, KF=Kitchen Faucet, EF=Exterior Faucet,
BTF=Bathroom Tub Faucet, LF=Laundry Faucet, RF=Refrigerator Faucet
WH = Water Heater WM = Water meter

CL=Closet

Side A

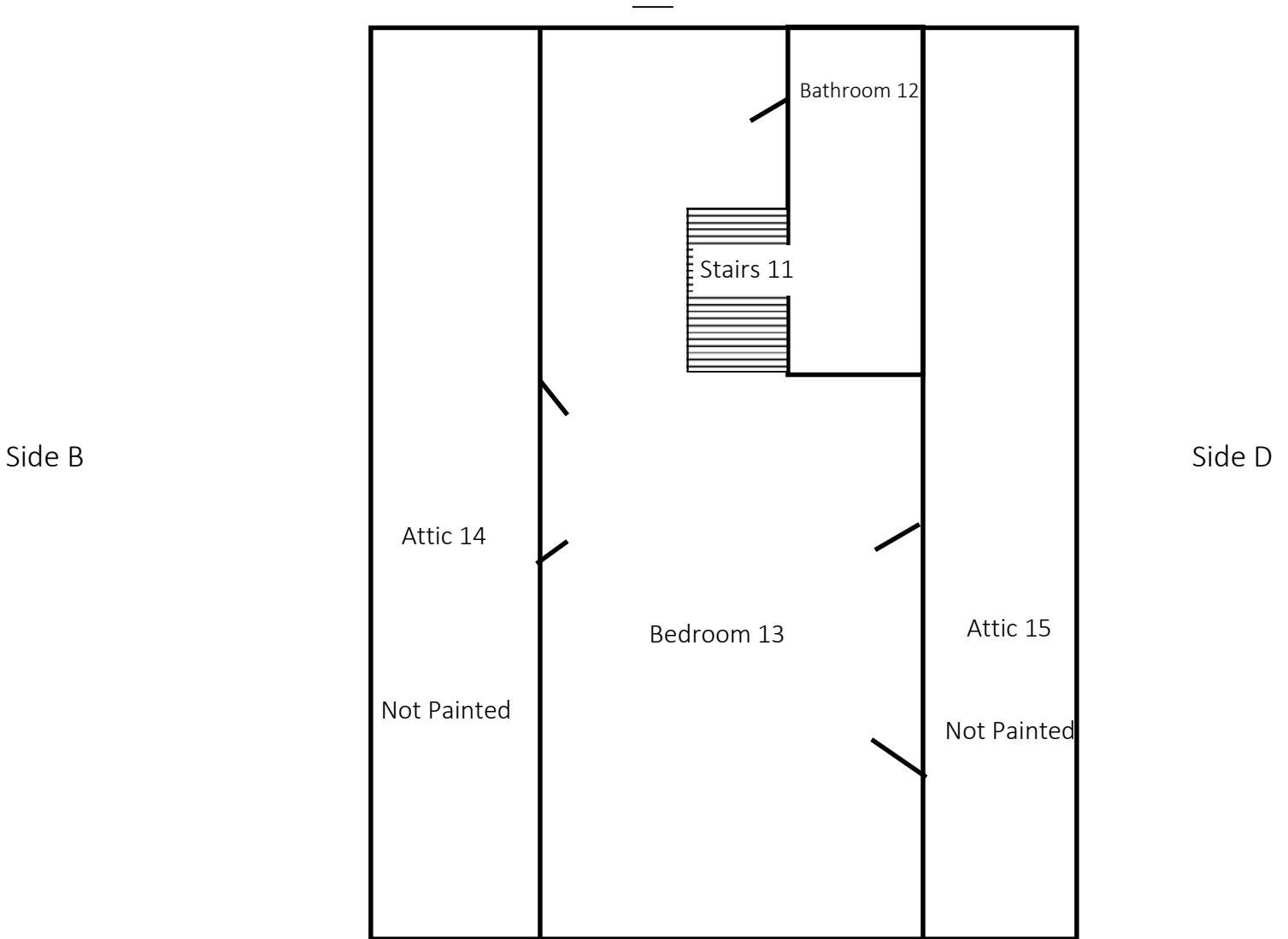


B-3: Floor Plans

Side C

INTERIOR THIRD FLOOR

*All windows are vinyl.



Window types:

WD = Wood **V** = Vinyl **AL** = Aluminum **M** = Metal **GB** = Glass block
ST = Steel **F** = Fixed **BU** = Boarded-up **W#** = Window Number **BW#**
= Basement Window Number

Dust wipe sample:

HF = Hard Floor, **CF** = Carpeted Floor
S = Window Sill, **T** = Window Trough, **EPF** = Exterior Porch Floor

Soil samples: SS-1, SS-2, SS-3, etc.

Water samples:

BF = Bathroom Faucet, **KF**=Kitchen Faucet, **EF**=Exterior Faucet,
BTF=Bathroom Tub Faucet, **LF**=Laundry Faucet, **RF**=Refrigerator Faucet
WH = Water Heater **WM** = Water meter

CL=Closet

F F

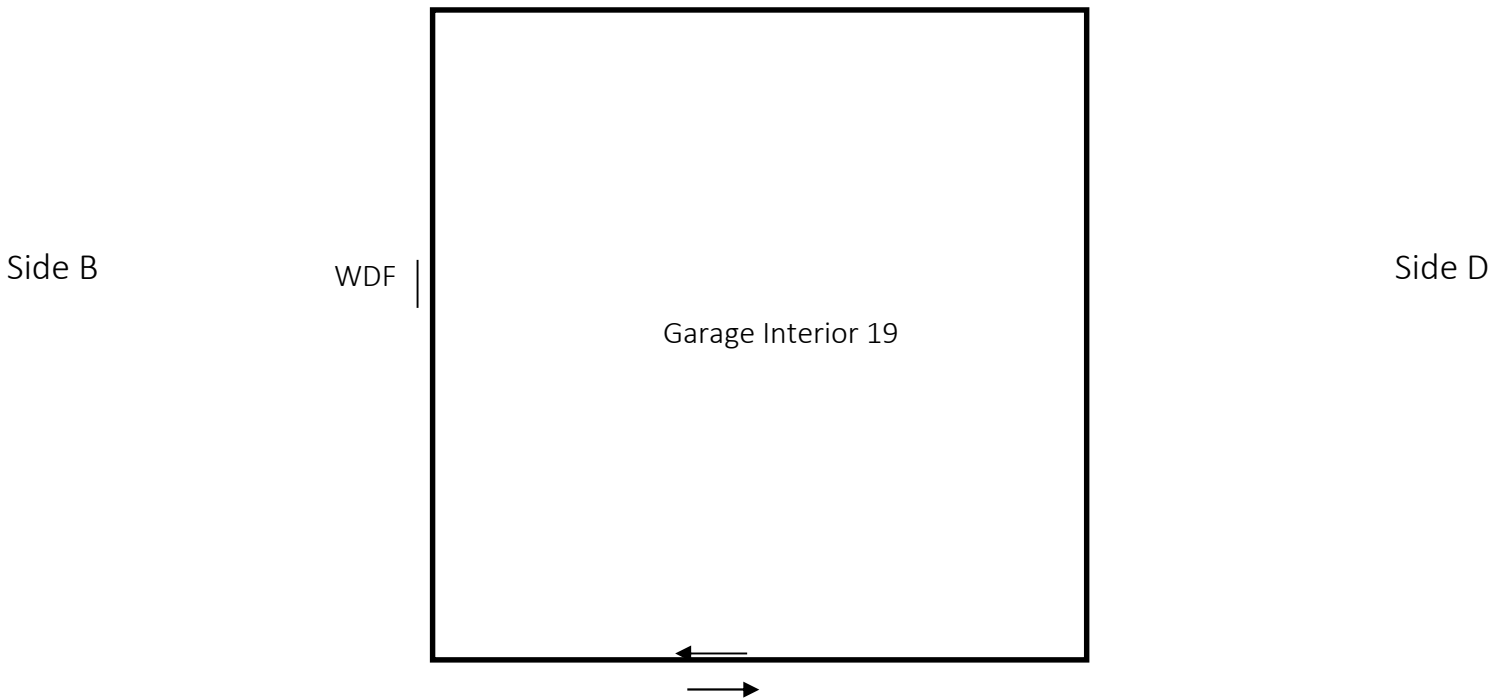
Side A



B-3: Floor Plans

Side C

INTERIOR GARAGE



Window types:

WD = Wood **V** = Vinyl **AL** = Aluminum **M** = Metal **GB** = Glass block
ST = Steel **F** = Fixed **BU** = Boarded-up **W#** = Window Number **BW#**
= Basement Window Number

Side A

Dust wipe sample:

HF = Hard Floor, **CF** = Carpeted Floor
S = Window Sill, **T** = Window Trough, **EPF** = Exterior Porch Floor

Soil samples: SS-1, SS-2, SS-3, etc.

Water samples:

BF = Bathroom Faucet, **KF**=Kitchen Faucet, **EF**=Exterior Faucet,
BTF=Bathroom Tub Faucet, **LF**=Laundry Faucet, **RF**=Refrigerator Faucet
WH = Water Heater **WM** = Water meter

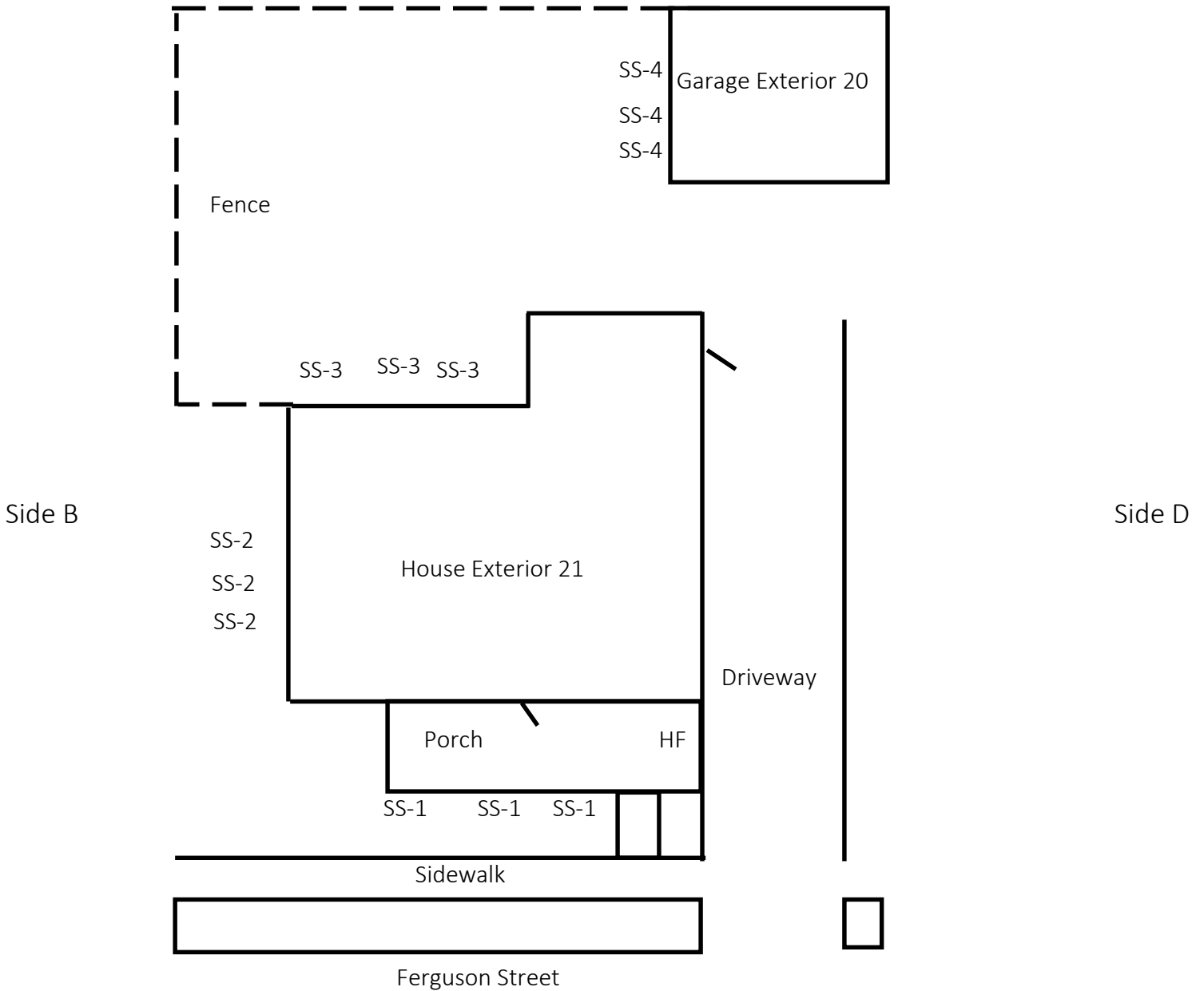
CL=Closet



B-3: Floor Plans

Side C

EXTERIOR PROPERTY LAYOUT



Window types:

WD = Wood V = Vinyl AL = Aluminum M = Metal GB = Glass block
 ST = Steel F = Fixed BU = Boarded-up W# = Window Number
 BW# = Basement Window Number

Dust wipe sample:

HF = Hard Floor, CF = Carpeted Floor
 S = Window Sill, T = Window Trough, EPF = Exterior Porch Floor

Soil samples: SS-1, SS-2, SS-3, etc.

Water samples:

BF = Bathroom Faucet, KF=Kitchen Faucet, EF=Exterior Faucet,
 BTF=Bathroom Tub Faucet, LF=Laundry Faucet, RF=Refrigerator Faucet
 WH = Water Heater WM = Water meter

CL=Closet



Side A

B-4: Photos



Side A



Side B



Side C



Side D



Garage Side A



Garage Side B



Garage Side C



Garage Side D



Living Room 1



Living Room 1 Side A



Dining Room 2



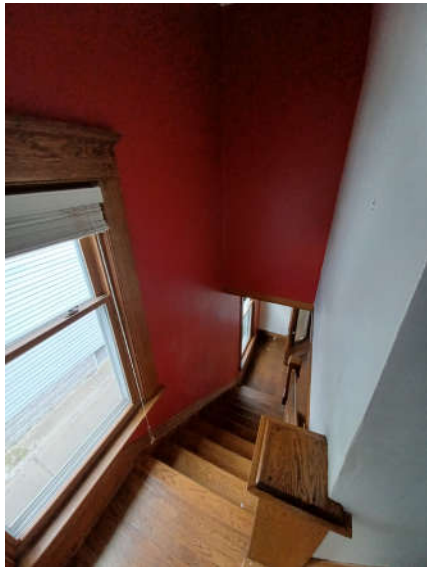
Dining Room 2 Sides B1, B2 & B3



Kitchen 3



Sunroom 4



Stairs 5



Hallway 6



Bedroom 7



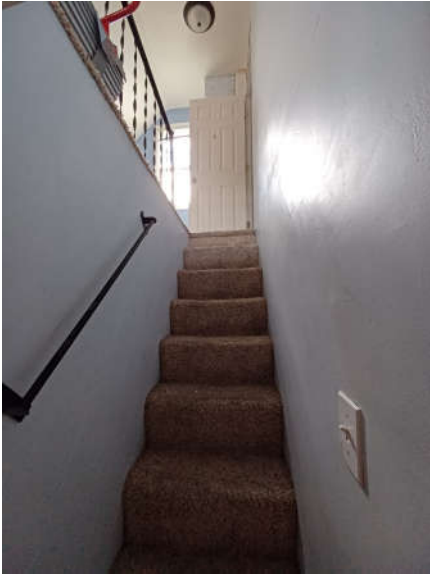
Bedroom 8



Bedroom 9



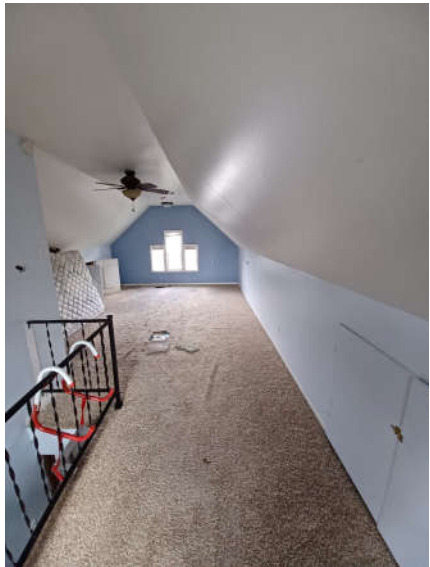
Bathroom 10



Stairs 11



Bathroom 12



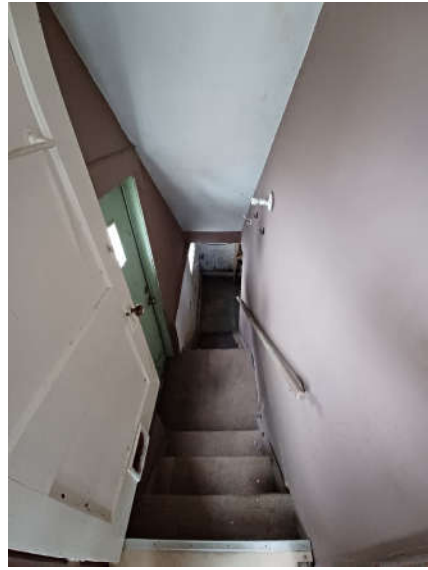
Bedroom 13



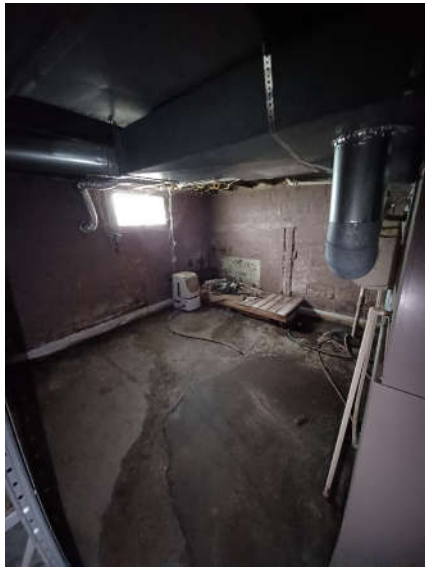
Attic 14



Attic 15



Stairs 16



Basement 17



Utility Room 18



Utility Room 18 Coal Door



Garage Interior 19



Garage Interior 19 Side B

APPENDIX C – LEAD: EDUCATION, TESTING, RESOURCES & LAWS

C-1: Lead Education

LEAD-BASED PAINT

Lead is a highly toxic metal. When we say paint, it includes:

- Varnishes
- Enamels
- Lacquers
- Glazes
- Stains
- Primers
- Coatings

Lead-based paint is a paint that has lead in it. Lead is used in paint to:

- Brighten the color
- Reduce corrosion (weathering / wear and tear)
- Speed up drying time

Lead was commonly used in household paint in homes built before **1978**. In 1978, the federal government banned the use of lead-based paint in homes (for consumers). The older the home, the more likely it is to have lead-based paint.

Before 1940



1940 – 1959



1960 – 1977



LEAD-HAZARDS

A lead-hazard is when lead is present in a surface and that surface is deteriorating or breaking down. There are specific definitions for different lead-hazards.

- **Lead-Based Paint Hazard** –any lead-based paint, including lead dust and soil that would have an adverse effect on human health.
- **Dust-Lead Hazard** – surface dust in a residence containing an area or mass concentration of lead equal to or in excess of:
 - 10 µg/ft²(micrograms per square feet) on floors
 - 40 µg/ft² on porches
 - 100 µg/ft²on interior window sills
 - 100 µg/ft²on window troughs
- **Soil-Lead Hazard** – bare soil (*soil not covered with grass, sod, some other vegetation, or paving, including the sand in sandboxes*) on a residential property that contains lead in excess of:
 - 400 ppm (parts per million) in play areas (*an area of frequent soil contact by children (e.g., sandboxes, swing sets, etc.)*) and vegetable gardens.
 - 1200 ppm in the rest of the yard.

To correct lead-hazards, there are two options:

- **Abatement**

- The permanent elimination of lead-based paint hazards. This includes:
 - Removal of building components coated with lead-based paint
 - Removal of dust-lead hazards
 - Removal of soil-lead hazards
 - Overlaying soil with durable covering such as asphalt
 - Enclosing lead-based paint hazards
 - Coating lead-based paint hazards with approved encapsulant (“a thick liquid used to cover lead-based paint”)
- This method requires:
 - Preparation
 - Waste disposal
 - Recordkeeping
 - Cleanup
 - Post abatement clearance testing
 - Monitoring (if applicable)

- **Interim Control**

- A temporary measure to reduce exposure to lead-based paint hazards. This includes, but is not limited to:
 - Preparing and painting lead-based paint hazards
 - Treatment of friction and impact surfaces
 - Specialized cleaning
 - Landscaping over soil-lead hazards (e.g., grass or sod)
 - Monitoring (*conducted by property owner or tenant*)
 - Re-evaluation (*conducted by a certified lead professional*)

For further information, please call MDHHS Healthy Homes Section at 517-335-9390.

LEAD EXPOSURE

Exposure to lead happens during the application, removal and failure of integrity (deterioration) of lead-based paint or from soil lead hazards. Deteriorated paint includes:

- Any paint coating that is peeling, chipping, blistering, flaking, worn, chalking, cracking, or otherwise becoming separated from the painted surface.

Lead-based paint breaks down into:

- **Paint chips** – chips are paint pieces that are detached from the original painted surface. Chips include paint that is peeling, chipping, chalking or cracked.
- **Dust** – dust is created when lead paint is scraped, dry sanded, heated or burned, or when painted surfaces rub together (opening / closing windows and doors). **Dust is the most common source of lead exposure among children.**
 - Dust from lead-based paint can also contaminate the soil. This can be a source of exposure when children play on the ground, or when people bring soil into the house on their shoes.

Lead chips and dust settle on surfaces and objects people touch. Settled lead dust can re-enter the air when people:

- Vacuum or sweep
- When they or their pet walk through it
- When windows or doors are open and allow air to circulate
- When fans circulate air
- Or any other time air is moving in the home

There are **other sources** of lead exposure. Lead is found in products that you may have in your home. These household items include:

- Painted toys; painted furniture
- Toy jewelry; cosmetics (makeup)
- Plumbing products like pipes and fixtures
- Food or liquid containers made of lead crystal or lead-glazed pottery or porcelain

Lead is present for some **jobs and hobbies**. These jobs and hobbies can bring lead home with you on your clothes or hands. Jobs and hobbies include:

- Renovation and painting
- Mining
- Smelting
- Battery recycling
- Refinishing old furniture
- Auto body work
- Shooting ranges
- Hunting (shot)
- Fishing (fishing sinkers and jigs)
- Stained glass (came and solder)
- Stock cars (weights used in stock cars)
- Making pottery (dyes and glazes)

To **reduce lead exposure from your job or hobby**:

- Do not put leaded items in your mouth (fishing sinkers, etc.)
- Wash hands before eating or drinking
- Avoid touching your face while working with lead materials
- Change clothes before entering home
- Wash clothes separately from other family members clothes

To **reduce lead exposure in the home**:

- Regularly wash hands, toys, and horizontal surfaces with wet methods. This method of cleaning includes:
 - Washing surfaces with soapy water
 - Using disposable cleaning materials (paper towel)
- Vacuum with a High Efficiency Particulate Air (HEPA) filtered vacuum
- Take shoes off before entering the home or living areas
- Cover lead exposed soil with fruitless plant materials

HEALTH EFFECTS OF LEAD EXPOSURE

Lead is a highly toxic metal. There is no safe level of lead exposure. Lead poisoning occurs when lead enters into the body through either: inhalation (breathing in) or ingestion (eating). Children under the age of six (6) are especially vulnerable to lead poisoning. They have a greater exposure to lead through:

- Frequent hand-to-mouth activity (mouthing objects).
- Consuming more food and drink, and breathing more air per kilogram of body weight than adults.
- Digesting 4-5 times more lead from the gut than adults.
- Nutritional deficiencies, such as an iron deficiency (which increases the bioavailability of lead – meaning it makes lead more available to enter the body).

Children under the age of six (6), their bodies and nervous system is not fully developed. One of the systems lead affects is the nervous system. Lead is a multi-system toxicant, causing:

- Brain and nervous system damage
- Decreased IQ
- Learning difficulties
- Speech, language, and behavior problems
- Hearing problems
- Slow or reduced growth
- Muscle or joint pain
- Reproductive problems (adult)
- Digestive problems
- Kidney damage
- Anemia
- High blood pressure

C-2: Lead Testing Procedures

PAINT

To test for lead in paint, an XRF instrument is used. XRF stands for “X-Ray Fluorescence.”

To measure lead, this device uses low level radiation. The radiation excites atoms within painted surfaces. Excitement, or movement, of atoms causes radiation to rebound back to the device. This rebound tells the device if lead is present. Lead is determined present if the level is 1 microgram per square centimeter ($\mu\text{g}/\text{cm}^2$) or more.

Appendix D-2 details the XRF device used.

DUST

Dust is collected using dust wipes. Dust wipes are disposable cloths used to collect dust. The United States Department of Housing and Urban Development (HUD) provides dust wipe best practices. HUD requests inspectors to:

- Use one dust wipe per sample area.
- Collect dust in a measured area. The measured area is 12” x 12” on a floor or a minimum of 14.4 square inches on a window or window trough.
- Open the dust wipe with a gloved hand.
- Perform dust wipe using “S” motions in sample area.
- Put the dust wipe sample into a labeled tube or container.
- Label states property location, sample location, and size of sample area.
- Send samples to trace metals laboratory.
- Report results in micrograms per square foot ($\mu\text{g}/\text{ft}^2$).

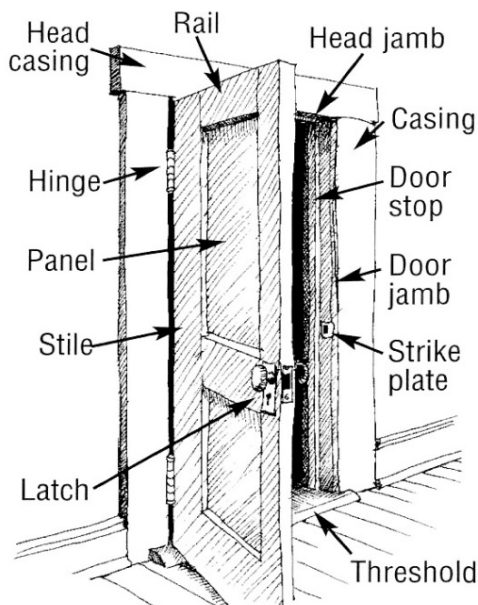
SOIL

Soil is collected using HUD best practices.

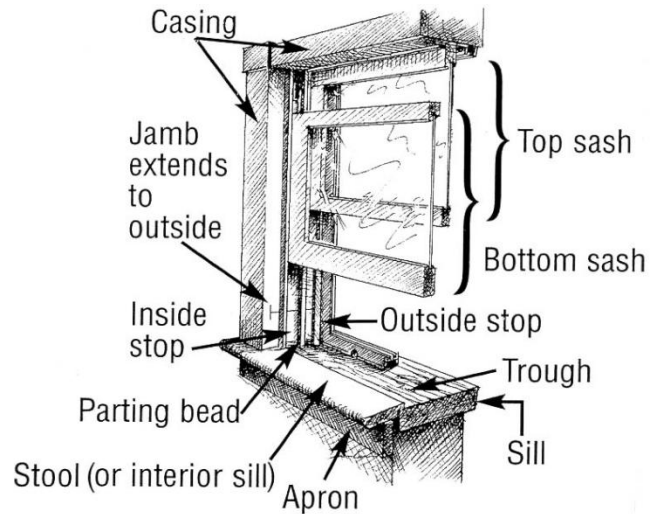
A soil sample comes from the upper ½ inch of soil. Garden soil is tested 4-6" (inches) down. All soil must come from soil on the property. Areas may include sandboxes, child play areas, and the roof drip line. A trace metals laboratory analyzes the soil for lead. Soil sample results are reported in parts per million (ppm).

HOUSING COMPONENT IDENTIFICATION

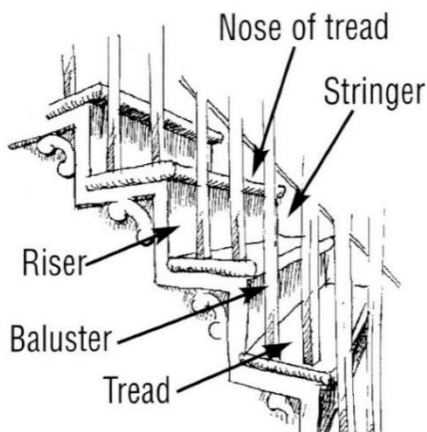
Please use the photos/diagrams below as a guide to help identify housing components noted in this report. Diagrams adopted from Lead Paint Safety: A Field Guide for Painting, Home Maintenance, and Renovation Work, U.S. Department of Housing and Urban Development, Office of Lead Hazard Control, June 1999.



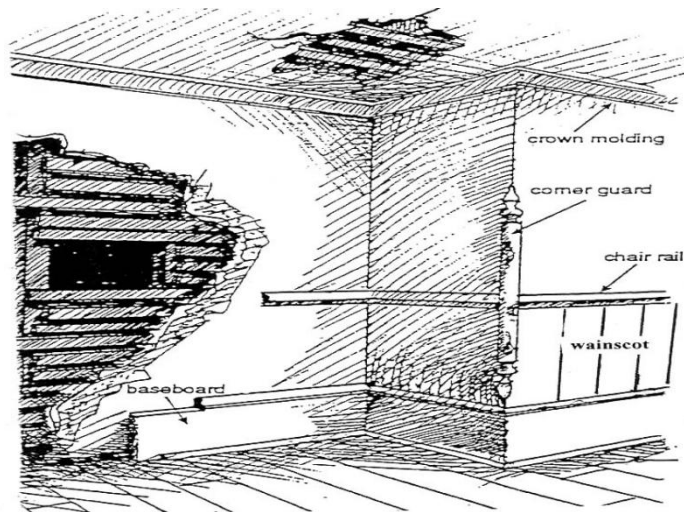
Door Components



Window Components



Stair Components



Wall Components

LEAD HAZARD CORRECTION COST ESTIMATES

Window replacement	\$500 - \$600
Wood window replacement	\$900 - \$1200
Window jamb liners	\$350 - \$500
Siding exterior	\$400 - \$600 square (square = 100 square feet)
Painting exterior	\$275 - \$400 square
Exterior door replacement	\$750 - \$900
Interior door replacement	\$300 - \$450
Friction/impact door	\$250 - \$400
E-cap baseboards	\$200 - \$400 per room
Paint baseboards	\$200 - \$300 per room
Stair system w/rubber	\$400 - \$800
Lead cleaning	\$100 - \$200 per room

C-3: Your Responsibilities

RE-EVALUATION & MONITORING SCHEDULE

Monitor Potential Lead Hazards Two Ways After Abatement/Interim Controls Completed:

Visual Survey: Perform one month and six months after lead hazard work. Perform once each year if no problems found. **Visual survey is completed by homeowner.**

Visual survey includes:

- Looking at painted surfaces known to have lead and see if paint is in good repair.
- Looking at areas lead hazards fixed to see if in good repair.
- Finding problems with the building that could cause new lead hazards.

Re-Evaluate: Every two years a **certified risk assessor** re-evaluates the building.

This includes:

- Measuring dust for lead.
- Measuring soil for lead.
- Assessing potential lead-based paint hazards.

FUTURE OWNERS OF THIS PROPERTY

A summary of this report must be shared with future tenants or owners of a pre-1978 property. Federal law (24 CFR part 35 and 40 CFR part 745) requires this report be shared before they become obligated under a lease or sales contract.

Landlords (lessors) and sellers are required to:

- Distribute an educational pamphlet. This pamphlet is approved from the U.S. Environmental Protection Agency (EPA). The document is: *“Protect Your Family from Lead in Your Home.”*
- Include standard warning language in lease or sale contracts. This is to ensure parents have information they need to protect their children from lead hazards.

Contact 800-424-LEAD (5323) for information about your obligations under federal regulations.

NOTICE TO LANDLORDS

Landlord Penalty Law

If a child with an elevated blood lead level is identified in your rental unit you are responsible for ensuring that lead hazards identified in the elevated blood lead level report have been properly addressed. The following must be followed to avoid receiving penalties assessed through the Michigan Lead Abatement Act.

- If you conduct the work on your rental unit you must be certified through the EPA RRP Program or certified through the Michigan Lead Abatement Program. Depending on the method used to correct the hazard, you must follow applicable laws to ensure appropriate work practices are followed.
- Hire a lead abatement contractor; please see the certified list located at www.michigan.gov/leadsafe.
- Check eligibility for work through the Lead Safe Home Program, please see webpage for details.

Any questions regarding compliance with the Landlord Penalty Act please email HHSInfo@michigan.gov or call 517-335-9390.

APPENDIX D – ALL XRF RESULTS & DEVICE USED

D-1: Results

ALL XRF RESULTS

TABLE 8: ALL XRF RESULTS

READING #	MG/CM ²	RESULT	COMPONENTS	SIDE	SIDE #	COLOR	CONDITION	SUBSTRATE	ROOM TYPE	ROOM #	COND CAUSE	FRIC-IMP	TEETH
1	1	Positive	Calibrate	-	-	-	-	-	-	-	-	-	-
2	1	Positive	Calibrate	-	-	-	-	-	-	-	-	-	-
3	1	Positive	Calibrate	-	-	-	-	-	-	-	-	-	-
4	0.1	Negative	Door	A	-	Stain	INTACT	Wood	Living Room	1	-	-	-
5	0.1	Negative	Door Casing	A	-	Stain	INTACT	Wood	Living Room	1	-	-	-
6	0.1	Negative	Door Jamb	A	-	Stain	INTACT	Wood	Living Room	1	-	-	-
7	19	Positive	Door Stop	A	-	White	Deteriorated	Wood	Living Room	1	Impact	Yes	No
8	1.7	Positive	Door Threshold	A	-	White	Deteriorated	Wood	Living Room	1	Friction	Yes	No
9	0.1	Negative	Clos. Door	C	-	Stain	INTACT	Wood	Living Room	1	-	-	-
10	0	Negative	Clos. Door Jamb	C	-	Stain	INTACT	Wood	Living Room	1	-	-	-
11	0.1	Negative	Clos. Door Stop	C	-	Stain	INTACT	Wood	Living Room	1	-	-	-
12	0.2	Negative	Clos. Door Casing	C	-	Stain	INTACT	Wood	Living Room	1	-	-	-
13	0.1	Negative	Clos. Baseboard	C	-	Stain	INTACT	Wood	Living Room	1	-	-	-
14	0	Negative	Shelf Bracket	C	-	Stain	INTACT	Wood	Living Room	1	-	-	-
15	0	Negative	Clos. Shelf	C	-	White	INTACT	Wood	Living Room	1	-	-	-
16	0.1	Negative	Clos. Wall	C	-	White	Deteriorated	Drywall	Living Room	1	-	-	-
17	0.1	Negative	Win. Casing	All	(All)	Stain	INTACT	Drywall	Living Room	1	-	-	-
18	0.1	Negative	Win. Sill-Stool	All	(All)	Stain	INTACT	Drywall	Living Room	1	-	-	-
19	0.1	Negative	Win. Stop Int.	All	(All)	Stain	INTACT	Drywall	Living Room	1	-	-	-

READING #	MG/CM ²	RESULT	COMPONENTS	SIDE	SIDE #	COLOR	CONDITION	SUBSTRATE	ROOM TYPE	ROOM #	COND CAUSE	FRIC-IMP	TEETH
20	0	Negative	Win. Apron	All	(All)	Stain	INTACT	Drywall	Living Room	1	-	-	-
21	0.1	Negative	Win. Sash Int.	A	(All)	Stain	INTACT	Drywall	Living Room	1	-	-	-
22	0	Negative	Floor	Floor	-	Stain	INTACT	Wood	Living Room	1	-	-	-
23	0.1	Negative	Baseboard	A	(All)	Stain	INTACT	Wood	Living Room	1	-	-	-
24	0.2	Negative	Crown Molding	A	(All)	Stain	INTACT	Wood	Living Room	1	-	-	-
25	0	Negative	Ceiling	Ceiling	-	White	INTACT	Plaster	Living Room	1	-	-	-
26	0.2	Negative	Wall	A	-	White	INTACT	Plaster	Living Room	1	-	-	-
27	0.2	Negative	Wall	B	-	White	INTACT	Plaster	Living Room	1	-	-	-
28	0.1	Negative	Wall	C	-	White	INTACT	Plaster	Living Room	1	-	-	-
29	0.1	Negative	Wall	D	-	White	INTACT	Plaster	Living Room	1	-	-	-
30	0.1	Negative	Wall	D	-	Red	INTACT	Plaster	Living Room	1	-	-	-
31	0.1	Negative	Arch Casing	C	-	Stain	INTACT	Wood	Living Room	1	-	-	-
32	0.2	Negative	Beam	C	-	Stain	INTACT	Wood	Living Room	1	-	-	-
33	0	Negative	Column	C	(All)	Stain	INTACT	Wood	Living Room	1	-	-	-
34	0	Negative	Ledge	C	(All)	Stain	INTACT	Wood	Living Room	1	-	-	-
35	0.1	Negative	Door Casing	D	-	Stain	INTACT	Wood	Dining Room	2	-	-	-
36	0.2	Negative	Door Jamb	D	-	Stain	INTACT	Wood	Dining Room	2	-	-	-
37	0.1	Negative	Win. Casing	All	(All)	Stain	INTACT	Wood	Dining Room	2	-	-	-
38	0.1	Negative	Win. Sill-Stool	All	(All)	Stain	INTACT	Wood	Dining Room	2	-	-	-
39	0.1	Negative	Win. Stop Int.	All	(All)	Stain	INTACT	Wood	Dining Room	2	-	-	-
40	0.2	Negative	Win. Apron	All	(All)	Stain	INTACT	Wood	Dining Room	2	-	-	-
41	0.1	Negative	Win. Mullion	All	(All)	Stain	INTACT	Wood	Dining Room	2	-	-	-
42	0.2	Negative	Win. Sash Int.	B	(All)	Stain	INTACT	Wood	Dining Room	2	-	-	-
43	0	Negative	Win. Sash Fixed	C	(All)	Stain	INTACT	Wood	Dining Room	2	-	-	-
44	0	Negative	Ledge	B	(All)	Stain	INTACT	Wood	Dining Room	2	-	-	-

READING #	MG/CM ²	RESULT	COMPONENTS	SIDE	SIDE #	COLOR	CONDITION	SUBSTRATE	ROOM TYPE	ROOM #	COND CAUSE	FRIC-IMP	TEETH
45	0	Negative	Cabinet Casing	B	(All)	Stain	INTACT	Wood	Dining Room	2	-	-	-
46	0.1	Negative	Cabinet Drawer	B	(All)	Stain	INTACT	Wood	Dining Room	2	-	-	-
47	0.2	Negative	Wall Casing	All	(All)	Stain	INTACT	Wood	Dining Room	2	-	-	-
48	0	Negative	Baseboard	D	(All)	Stain	INTACT	Wood	Dining Room	2	-	-	-
49	0.2	Negative	Beam	Ceiling	-	Stain	INTACT	Wood	Dining Room	2	-	-	-
50	0.1	Negative	Ceiling	Ceiling	-	White	INTACT	Plaster	Dining Room	2	-	-	-
51	0.1	Negative	Wall	B	-	White	INTACT	Plaster	Dining Room	2	-	-	-
52	0.1	Negative	Wall	C	-	White	INTACT	Plaster	Dining Room	2	-	-	-
53	0.2	Negative	Wall	D	-	White	Deteriorated	Plaster	Dining Room	2	-	-	-
54	0.2	Negative	Wall	D	-	Red	INTACT	Plaster	Dining Room	2	-	-	-
55	0.1	Negative	Wall	C	-	Red	INTACT	Plaster	Dining Room	2	-	-	-
56	0.2	Negative	Wall	B	-	Red	INTACT	Plaster	Dining Room	2	-	-	-
57	0.1	Negative	Floor	Floor	-	Stain	INTACT	Wood	Dining Room	2	-	-	-
58	0.3	Negative	Door Casing	B	-	Stain	INTACT	Wood	Kitchen	3	-	-	-
59	0.1	Negative	Door Casing	C	-	Stain	INTACT	Wood	Kitchen	3	-	-	-
60	0	Negative	Door Casing	A	-	Stain	INTACT	Wood	Kitchen	3	-	-	-
61	0.1	Negative	Clos. Door Casing	A	-	Stain	INTACT	Wood	Kitchen	3	-	-	-
62	0.1	Negative	Clos. Door Jamb	A	-	Stain	INTACT	Wood	Kitchen	3	-	-	-
63	0.1	Negative	Clos. Shelf	A	-	Grey	INTACT	Wood	Kitchen	3	-	-	-
64	0.2	Negative	Clos. Baseboard	A	-	Grey	INTACT	Wood	Kitchen	3	-	-	-
65	0.1	Negative	Clos. Wall	A	-	Grey	INTACT	Plaster	Kitchen	3	-	-	-
66	0.1	Negative	Win. Casing	D	(All)	Stain	INTACT	Wood	Kitchen	3	-	-	-
67	0.1	Negative	Win. Sill-Stool	D	(All)	Stain	INTACT	Wood	Kitchen	3	-	-	-
68	0	Negative	Win. Stop Int.	D	(All)	Stain	INTACT	Wood	Kitchen	3	-	-	-
69	0.1	Negative	Win. Apron	D	(All)	Stain	INTACT	Wood	Kitchen	3	-	-	-

READING #	MG/CM ²	RESULT	COMPONENTS	SIDE	SIDE #	COLOR	CONDITION	SUBSTRATE	ROOM TYPE	ROOM #	COND CAUSE	FRIC-IMP	TEETH
70	0	Negative	Wall	A	-	Blue	INTACT	Plaster	Kitchen	3	-	-	-
71	0.7	Negative	Wall	B	-	Blue	Deteriorated	Plaster	Kitchen	3	-	-	-
72	11.1	Positive	Wall	C	-	Blue	INTACT	Plaster	Kitchen	3	-	-	-
73	10.9	Positive	Wall	D	-	Blue	Deteriorated	Plaster	Kitchen	3	Moisture	No	No
74	9.2	Positive	Ceiling	Ceiling	-	White	Deteriorated	Plaster	Kitchen	3	Moisture	No	No
75	0	Negative	Baseboard	B	(All)	Blue	Deteriorated	Wood	Kitchen	3	-	-	-
76	0.3	Negative	Wall Casing	D	(All)	Blue	INTACT	Wood	Kitchen	3	-	-	-
77	14.6	Positive	Door Casing	A	(All)	White	Deteriorated	Wood	Sun Room	4	Impact	Yes	No
78	14	Positive	Door Stop	A	(All)	White	Deteriorated	Wood	Sun Room	4	Impact	Yes	No
79	18	Positive	Door Jamb	A	(All)	White	Deteriorated	Wood	Sun Room	4	Friction	Yes	No
80	0.2	Negative	Door Casing	D	(All)	White	INTACT	Wood	Sun Room	4	-	-	-
81	0.3	Negative	Door Jamb	D	(All)	White	INTACT	Wood	Sun Room	4	-	-	-
82	0.2	Negative	Door Stop	D	(All)	Beige	Deteriorated	Wood	Sun Room	4	-	-	-
83	0.1	Negative	Win. Casing	B	(All)	White	INTACT	Wood	Sun Room	4	-	-	-
84	0.2	Negative	Win. Sill-Stool	B	(All)	White	INTACT	Wood	Sun Room	4	-	-	-
85	0	Negative	Win. Apron	B	(All)	White	INTACT	Wood	Sun Room	4	-	-	-
86	0	Negative	Win. Mullion	B	(All)	White	INTACT	Wood	Sun Room	4	-	-	-
87	14.5	Positive	Wall	A	-	Green	Deteriorated	Wood	Sun Room	4	Moisture	No	No
88	0.1	Negative	Wall	B	-	Yellow	Deteriorated	Wood	Sun Room	4	-	-	-
89	0	Negative	Wall	C	-	Yellow	Deteriorated	Wood	Sun Room	4	-	-	-
90	0	Negative	Wall	D	-	Yellow	Deteriorated	Wood	Sun Room	4	-	-	-
91	13.4	Positive	Ceiling	Ceiling	-	White	Deteriorated	Wood	Sun Room	4	Moisture	No	No
92	1.7	Positive	Crown Molding	Ceiling	-	White	INTACT	Wood	Sun Room	4	-	-	-
93	1	Positive	Crown Molding	Ceiling	-	White	INTACT	Wood	Sun Room	4	-	-	-
94	0.4	Negative	Conduit	A	(All)	Green	INTACT	Metal	Sun Room	4	-	-	-

READING #	MG/CM ²	RESULT	COMPONENTS	SIDE	SIDE #	COLOR	CONDITION	SUBSTRATE	ROOM TYPE	ROOM #	COND CAUSE	FRIC-IMP	TEETH
95	0.4	Negative	Conduit	Ceiling	(All)	White	INTACT	Metal	Sun Room	4	-	-	-
96	0	Negative	Door Stop	C	(All)	Stain	INTACT	Wood	Base. Stair	16	-	-	-
97	0.2	Negative	Door Jamb	C	(All)	Stain	INTACT	Wood	Base. Stair	16	-	-	-
98	0.4	Negative	Door	C	(All)	White	Deteriorated	Wood	Base. Stair	16	-	-	-
99	0	Negative	Door Jamb	C	(All)	Purple	INTACT	Wood	Base. Stair	16	-	-	-
100	0.4	Negative	Door Casing	C	(All)	Purple	INTACT	Wood	Base. Stair	16	-	-	-
101	11.5	Positive	Door Casing	D	(All)	Purple	INTACT	Wood	Base. Stair	16	-	-	-
102	2.7	Positive	Door Stop	D	(All)	Green	INTACT	Wood	Base. Stair	16	-	-	-
103	11.9	Positive	Door Jamb Int.	D	(All)	Green	Deteriorated	Wood	Base. Stair	16	Friction	Yes	No
104	0	Negative	Door	D	(All)	Green	INTACT	Wood	Base. Stair	16	-	-	-
105	7.8	Positive	Wall	D	-	Purple	INTACT	Plaster	Base. Stair	16	-	-	-
106	7.9	Positive	Wall	B	-	Purple	INTACT	Plaster	Base. Stair	16	-	-	-
107	7.7	Positive	Ceiling	Ceiling	-	White	Deteriorated	Plaster	Base. Stair	16	Moisture	No	No
108	0	Negative	Wall	B	-	Purple	INTACT	Paneling	Base. Stair	16	-	-	-
109	0.2	Negative	Wall	D	-	White	Deteriorated	Cinderblock	Base. Stair	16	-	-	-
110	8.5	Positive	Wall Casing	D	-	Purple	INTACT	Wood	Base. Stair	16	-	-	-
111	0	Negative	Railing	B	-	Purple	Deteriorated	Wood	Base. Stair	16	-	-	-
112	5	Positive	Stair Stringer	All	(All)	Purple	Deteriorated	Wood	Base. Stair	16	Impact	Yes	No
113	3.2	Positive	Stair Stringer	All	(All)	Green	Deteriorated	Wood	Base. Stair	16	Impact	Yes	No
114	1.2	Positive	Stair Tread	All	(All)	Green	Deteriorated	Wood	Base. Stair	16	Friction	Yes	No
115	8.6	Positive	Stair Riser	All	(All)	Green	Deteriorated	Wood	Base. Stair	16	Impact	Yes	No
116	0.1	Negative	Wall	D	-	Purple	INTACT	Cinderblock	Base. Stair	16	-	-	-
117	0.3	Negative	Wall	B	-	Purple	INTACT	Cinderblock	Base. Stair	16	-	-	-
118	0.1	Negative	Wall	D	-	White	Deteriorated	Cinderblock	Basement	17	-	-	-
119	0	Negative	Wall	A	-	White	Deteriorated	Cinderblock	Basement	17	-	-	-

READING #	MG/CM ²	RESULT	COMPONENTS	SIDE	SIDE #	COLOR	CONDITION	SUBSTRATE	ROOM TYPE	ROOM #	COND CAUSE	FRIC-IMP	TEETH
120	0.1	Negative	Wall	B	-	Purple	Deteriorated	Cinderblock	Basement	17	-	-	-
121	0.1	Negative	Wall	A	-	Purple	Deteriorated	Cinderblock	Basement	17	-	-	-
122	0	Negative	Wall	C	-	Purple	Deteriorated	Cinderblock	Basement	17	-	-	-
123	0.1	Negative	Door Jamb	C	-	White	Deteriorated	Wood	Basement	17	-	-	-
124	0.2	Negative	Door Stop	C	-	White	Deteriorated	Wood	Basement	17	-	-	-
125	9.7	Positive	Win. Casing	D	-	White	Deteriorated	Wood	Basement	17	Impact	Yes	No
126	6.1	Positive	Win. Sash Int.	D	-	White	Deteriorated	Wood	Basement	17	Friction	Yes	No
127	0	Negative	Win. Sash Int.	B	-	Green	Deteriorated	Wood	Basement	17	-	-	-
128	0.1	Negative	Win. Casing	B	-	Purple	Deteriorated	Wood	Basement	17	-	-	-
129	0.1	Negative	Baseboard	C	(All)	White	Deteriorated	Wood	Basement	17	-	-	-
130	0.1	Negative	Floor	Floor	-	Purple	Deteriorated	Concrete	Basement	17	-	-	-
131	0.1	Negative	Wall	A	-	Purple	Deteriorated	Cinderblock	Utility Room	18	-	-	-
132	0.2	Negative	Wall	B	-	Purple	Deteriorated	Cinderblock	Utility Room	18	-	-	-
133	0.3	Negative	Wall	C	-	Purple	Deteriorated	Cinderblock	Utility Room	18	-	-	-
134	0.3	Negative	Wall	D	-	Purple	Deteriorated	Cinderblock	Utility Room	18	-	-	-
135	0.2	Negative	Wall	D	-	Purple	INTACT	Wood	Basement	17	-	-	-
136	0	Negative	Stair Riser	All	(All)	Stain	INTACT	Wood	Stairwell	5	-	-	-
137	0.1	Negative	Stair Stringer	All	(All)	Stain	INTACT	Wood	Stairwell	5	-	-	-
138	0.2	Negative	Stair Tread	All	(All)	Stain	INTACT	Wood	Stairwell	5	-	-	-
139	0	Negative	Railing	All	(All)	Stain	INTACT	Wood	Stairwell	5	-	-	-
140	0	Negative	Baluster	All	(All)	Stain	INTACT	Wood	Stairwell	5	-	-	-
141	0.1	Negative	Newel Post	All	(All)	Stain	INTACT	Wood	Stairwell	5	-	-	-
142	0	Negative	Stair Baseboard	All	(All)	Stain	INTACT	Wood	Stairwell	5	-	-	-
143	0	Negative	Crown Molding	All	(All)	Stain	INTACT	Wood	Stairwell	5	-	-	-
144	0.1	Negative	Floor	Floor	-	Stain	INTACT	Wood	Stairwell	5	-	-	-

READING #	MG/CM ²	RESULT	COMPONENTS	SIDE	SIDE #	COLOR	CONDITION	SUBSTRATE	ROOM TYPE	ROOM #	COND CAUSE	FRIC-IMP	TEETH
145	0.1	Negative	Win. Casing	D	-	Stain	INTACT	Wood	Stairwell	5	-	-	-
146	0.1	Negative	Win. Sill-Stool	D	-	Stain	INTACT	Wood	Stairwell	5	-	-	-
147	0	Negative	Win. Stop Int.	D	-	Stain	INTACT	Wood	Stairwell	5	-	-	-
148	0	Negative	Win. Apron	D	-	Stain	INTACT	Wood	Stairwell	5	-	-	-
149	0.1	Negative	Wall	A	-	White	INTACT	Plaster	Stairwell	5	-	-	-
150	0.2	Negative	Wall	B	-	White	Deteriorated	Plaster	Stairwell	5	-	-	-
151	0.2	Negative	Wall	C	-	White	Deteriorated	Plaster	Stairwell	5	-	-	-
152	0.1	Negative	Wall	D	-	Red	INTACT	Plaster	Stairwell	5	-	-	-
153	0.1	Negative	Wall	A	-	Red	INTACT	Plaster	Stairwell	5	-	-	-
154	0.1	Negative	Ceiling	Ceiling	-	White	INTACT	Plaster	Stairwell	5	-	-	-
155	0	Negative	Door Casing	All	(All)	Stain	INTACT	Wood	Hallway	6	-	-	-
156	0.1	Negative	Door	All	(All)	Stain	INTACT	Wood	Hallway	6	-	-	-
157	0	Negative	Clos. Door	B	-	Stain	INTACT	Wood	Hallway	6	-	-	-
158	0	Negative	Clos. Door Casing	B	-	Stain	INTACT	Wood	Hallway	6	-	-	-
159	0	Negative	Clos. Door Jamb	B	-	Stain	INTACT	Wood	Hallway	6	-	-	-
160	0	Negative	Clos. Door Stop	B	-	Stain	INTACT	Wood	Hallway	6	-	-	-
161	0	Negative	Clos. Baseboard	B	-	Stain	INTACT	Wood	Hallway	6	-	-	-
162	0	Negative	Shelf Bracket	B	-	Stain	INTACT	Wood	Hallway	6	-	-	-
163	0.1	Negative	Clos. Wall	B	-	Stain	INTACT	Wood	Hallway	6	-	-	-
164	0.1	Negative	Wall	A	-	White	INTACT	Plaster	Hallway	6	-	-	-
165	0.3	Negative	Wall	C	-	White	INTACT	Plaster	Hallway	6	-	-	-
166	0.1	Negative	Ceiling	Ceiling	-	White	Deteriorated	Plaster	Hallway	6	-	-	-
167	0	Negative	Crown Molding	All	(All)	Stain	INTACT	Wood	Hallway	6	-	-	-
168	0.1	Negative	Baseboard	A	(All)	Stain	INTACT	Wood	Hallway	6	-	-	-
169	0.1	Negative	Door Casing	C	-	Stain	INTACT	Wood	Bedroom	7	-	-	-

READING #	MG/CM ²	RESULT	COMPONENTS	SIDE	SIDE #	COLOR	CONDITION	SUBSTRATE	ROOM TYPE	ROOM #	COND CAUSE	FRIC-IMP	TEETH
170	0	Negative	Door Stop	C	-	Stain	INTACT	Wood	Bedroom	7	-	-	-
171	0.1	Negative	Door Jamb	C	-	Stain	INTACT	Wood	Bedroom	7	-	-	-
172	0	Negative	Win. Casing	A	-	Stain	INTACT	Wood	Bedroom	7	-	-	-
173	0.1	Negative	Win. Sill-Stool	A	-	Stain	INTACT	Wood	Bedroom	7	-	-	-
174	0.1	Negative	Win. Stop Int.	A	-	Stain	INTACT	Wood	Bedroom	7	-	-	-
175	0	Negative	Win. Apron	A	-	Stain	INTACT	Wood	Bedroom	7	-	-	-
176	0	Negative	Baseboard	B	(All)	Stain	INTACT	Wood	Bedroom	7	-	-	-
177	0.1	Negative	Wall	A	-	Yellow	INTACT	Plaster	Bedroom	7	-	-	-
178	0	Negative	Wall	B	-	Yellow	INTACT	Plaster	Bedroom	7	-	-	-
179	0.2	Negative	Wall	C	-	Yellow	INTACT	Plaster	Bedroom	7	-	-	-
180	0.1	Negative	Wall	D	-	Yellow	Deteriorated	Plaster	Bedroom	7	-	-	-
181	0.2	Negative	Ceiling	Ceiling	-	White	Deteriorated	Plaster	Bedroom	7	-	-	-
182	0.1	Negative	Wall Casing	D	-	Yellow	INTACT	Wood	Bedroom	7	-	-	-
183	0.1	Negative	Door Casing	C	-	Stain	INTACT	Wood	Bedroom	8	-	-	-
184	0.1	Negative	Door Stop	C	-	Stain	INTACT	Wood	Bedroom	8	-	-	-
185	0	Negative	Door Jamb	C	-	Stain	INTACT	Wood	Bedroom	8	-	-	-
186	0	Negative	Clos. Door	C	-	Stain	INTACT	Wood	Bedroom	8	-	-	-
187	0	Negative	Clos. Door Jamb	C	-	Stain	INTACT	Wood	Bedroom	8	-	-	-
188	0	Negative	Clos. Door Stop	C	-	Stain	INTACT	Wood	Bedroom	8	-	-	-
189	0.1	Negative	Clos. Door Casing	C	-	Stain	INTACT	Wood	Bedroom	8	-	-	-
190	0	Negative	Clos. Baseboard	C	-	Stain	INTACT	Wood	Bedroom	8	-	-	-
191	0	Negative	Shelf Bracket	C	-	White	INTACT	Wood	Bedroom	8	-	-	-
192	0	Negative	Clos. Shelf	C	-	White	INTACT	Wood	Bedroom	8	-	-	-
193	0	Negative	Clos. Wall	C	-	White	INTACT	Drywall	Bedroom	8	-	-	-
194	0	Negative	Win. Casing	A	(All)	Stain	INTACT	Wood	Bedroom	8	-	-	-

READING #	MG/CM ²	RESULT	COMPONENTS	SIDE	SIDE #	COLOR	CONDITION	SUBSTRATE	ROOM TYPE	ROOM #	COND CAUSE	FRIC-IMP	TEETH
195	0	Negative	Win. Sill-Stool	A	(All)	Stain	INTACT	Wood	Bedroom	8	-	-	-
196	0	Negative	Win. Stop Int.	A	(All)	Stain	INTACT	Wood	Bedroom	8	-	-	-
197	0.1	Negative	Win. Apron	A	(All)	Stain	INTACT	Wood	Bedroom	8	-	-	-
198	0	Negative	Baseboard	A	(All)	Stain	INTACT	Wood	Bedroom	8	-	-	-
199	0.2	Negative	Wall	A	-	Green	Deteriorated	Plaster	Bedroom	8	-	-	-
200	0.2	Negative	Wall	B	-	Green	Deteriorated	Plaster	Bedroom	8	-	-	-
201	0.2	Negative	Wall	C	-	Green	Deteriorated	Plaster	Bedroom	8	-	-	-
202	0.1	Negative	Wall	D	-	Green	Deteriorated	Plaster	Bedroom	8	-	-	-
203	0.1	Negative	Ceiling	Ceiling	-	White	Deteriorated	Plaster	Bedroom	8	-	-	-
204	0	Negative	Door Casing	A	-	Stain	INTACT	Wood	Bedroom	9	-	-	-
205	0	Negative	Door Stop	A	-	Stain	INTACT	Wood	Bedroom	9	-	-	-
206	0	Negative	Door Jamb	A	-	Stain	INTACT	Wood	Bedroom	9	-	-	-
207	0.1	Negative	Clos. Door	D	-	Stain	INTACT	Wood	Bedroom	9	-	-	-
208	0	Negative	Clos. Door Jamb	D	-	Stain	INTACT	Wood	Bedroom	9	-	-	-
209	0.2	Negative	Clos. Door Stop	D	-	Stain	INTACT	Wood	Bedroom	9	-	-	-
210	0.2	Negative	Clos. Door Casing	D	-	Stain	INTACT	Wood	Bedroom	9	-	-	-
211	0	Negative	Clos. Baseboard	D	-	Stain	INTACT	Wood	Bedroom	9	-	-	-
212	0	Negative	Shelf Bracket	D	-	Stain	INTACT	Wood	Bedroom	9	-	-	-
213	0	Negative	Clos. Shelf	D	-	Blue	INTACT	Wood	Bedroom	9	-	-	-
214	0	Negative	Clos. Wall	D	-	Blue	INTACT	Plaster	Bedroom	9	-	-	-
215	0.1	Negative	Wall	D	-	Blue	Deteriorated	Plaster	Bedroom	9	-	-	-
216	0.1	Negative	Wall	A	-	Blue	Deteriorated	Plaster	Bedroom	9	-	-	-
217	0	Negative	Wall	B	-	Blue	Deteriorated	Plaster	Bedroom	9	-	-	-
218	0.1	Negative	Wall	C	-	Blue	Deteriorated	Plaster	Bedroom	9	-	-	-
219	0.2	Negative	Ceiling	Ceiling	-	Blue	Deteriorated	Plaster	Bedroom	9	-	-	-

READING #	MG/CM ²	RESULT	COMPONENTS	SIDE	SIDE #	COLOR	CONDITION	SUBSTRATE	ROOM TYPE	ROOM #	COND CAUSE	FRIC-IMP	TEETH
220	0.1	Negative	Win. Casing	C	-	Stain	INTACT	Wood	Bedroom	9	-	-	-
221	0.1	Negative	Win. Sill-Stool	C	-	Stain	INTACT	Wood	Bedroom	9	-	-	-
222	0.1	Negative	Win. Stop Int.	C	-	Stain	INTACT	Wood	Bedroom	9	-	-	-
223	0	Negative	Win. Apron	C	-	Stain	INTACT	Wood	Bedroom	9	-	-	-
224	0.1	Negative	Door Jamb Ext.	A	-	Stain	INTACT	Wood	Bathroom	10	-	-	-
225	0.1	Negative	Door Stop	A	-	Stain	INTACT	Wood	Bathroom	10	-	-	-
226	1.8	Positive	Door Jamb Int.	A	-	White	Deteriorated	Wood	Bathroom	10	Friction	Yes	No
227	0.1	Negative	Door Casing	A	-	White	Deteriorated	Wood	Bathroom	10	-	-	-
228	1.7	Positive	Door	A	-	White	Deteriorated	Wood	Bathroom	10	Friction	Yes	No
229	1.8	Positive	Win. Casing	C	-	White	INTACT	Wood	Bathroom	10	-	-	-
230	0	Negative	Win. Sill-Stool	C	-	White	INTACT	Wood	Bathroom	10	-	-	-
231	0.1	Negative	Win. Stop Int.	C	-	White	INTACT	Wood	Bathroom	10	-	-	-
232	2.8	Positive	Win. Apron	C	-	White	INTACT	Wood	Bathroom	10	-	-	-
233	0.1	Negative	Wall	A	-	Purple	INTACT	Plaster	Bathroom	10	-	-	-
234	0.1	Negative	Wall	B	-	Purple	Deteriorated	Plaster	Bathroom	10	-	-	-
235	0.1	Negative	Wall	C	-	Purple	Deteriorated	Plaster	Bathroom	10	-	-	-
236	0.2	Negative	Wall	D	-	Purple	Deteriorated	Plaster	Bathroom	10	-	-	-
237	0.3	Negative	Wall	D	-	White	Deteriorated	Paneling	Bathroom	10	-	-	-
238	0.3	Negative	Wall	C	-	White	Deteriorated	Paneling	Bathroom	10	-	-	-
239	0.2	Negative	Ceiling	Ceiling	-	White	Deteriorated	Plaster	Bathroom	10	-	-	-
240	0.1	Negative	Wall Casing	D	(All)	Beige	INTACT	Wood	Bathroom	10	-	-	-
241	2.9	Positive	Baseboard	C	(All)	White	INTACT	Wood	Bathroom	10	-	-	-
242	0.3	Negative	Wall Register	B	(All)	White	INTACT	Metal	Bathroom	10	-	-	-
243	1	Positive	Calibrate	-	-	-	-	-	-	-	-	-	-
244	0.9	Negative	Calibrate	-	-	-	-	-	-	-	-	-	-

READING #	MG/CM ²	RESULT	COMPONENTS	SIDE	SIDE #	COLOR	CONDITION	SUBSTRATE	ROOM TYPE	ROOM #	COND CAUSE	FRIC-IMP	TEETH
245	1	Positive	Calibrate	-	-	-	-	-	-	-	-	-	-
246	0	Negative	Door Stop	A	-	Stain	INTACT	Wood	Stairwell	11	-	-	-
247	0	Negative	Door Jamb	A	-	Stain	INTACT	Wood	Stairwell	11	-	-	-
248	0.2	Negative	Wall	A	-	Blue	INTACT	Plaster	Stairwell	11	-	-	-
249	0.1	Negative	Wall	B	-	Blue	Deteriorated	Plaster	Stairwell	11	-	-	-
250	0.3	Negative	Wall	D	-	Blue	Deteriorated	Plaster	Stairwell	11	-	-	-
251	0.1	Negative	Stair Stringer	All	(All)	Blue	INTACT	Wood	Stairwell	11	-	-	-
252	0	Negative	Door Casing	B	-	White	INTACT	Wood	Bathroom	12	-	-	-
253	0.1	Negative	Door Stop	B	-	White	INTACT	Wood	Bathroom	12	-	-	-
254	0.2	Negative	Door Jamb	B	-	White	INTACT	Wood	Bathroom	12	-	-	-
255	0.2	Negative	Wall	A	-	Blue	INTACT	Plaster	Bathroom	12	-	-	-
256	0.1	Negative	Wall	B	-	Blue	INTACT	Plaster	Bathroom	12	-	-	-
257	0.1	Negative	Wall	C	-	Blue	INTACT	Plaster	Bathroom	12	-	-	-
258	0.1	Negative	Wall	D	-	Blue	INTACT	Plaster	Bathroom	12	-	-	-
259	0.2	Negative	Ceiling	Ceiling	-	Blue	INTACT	Plaster	Bathroom	12	-	-	-
260	0.1	Negative	Baseboard	D	(All)	White	INTACT	Wood	Bathroom	12	-	-	-
261	0.2	Negative	Chimney	C	-	White	INTACT	Brick	Bedroom	13	-	-	-
262	0.1	Negative	Win. Casing	C	-	White	INTACT	Wood	Bedroom	13	-	-	-
263	0.1	Negative	Win. Stop Int.	C	-	White	INTACT	Wood	Bedroom	13	-	-	-
264	0.1	Negative	Win. Casing	A	(All)	White	INTACT	Wood	Bedroom	13	-	-	-
265	0.2	Negative	Win. Sill-Stool	A	(All)	White	Deteriorated	Wood	Bedroom	13	-	-	-
266	0.2	Negative	Win. Stop Int.	A	(All)	White	INTACT	Wood	Bedroom	13	-	-	-
267	0.1	Negative	Win. Mullion	A	(All)	White	INTACT	Wood	Bedroom	13	-	-	-
268	0.2	Negative	Wall	A	-	Blue	Deteriorated	Plaster	Bedroom	13	-	-	-
269	0.3	Negative	Wall	B	-	Blue	Deteriorated	Plaster	Bedroom	13	-	-	-

READING #	MG/CM ²	RESULT	COMPONENTS	SIDE	SIDE #	COLOR	CONDITION	SUBSTRATE	ROOM TYPE	ROOM #	COND CAUSE	FRIC-IMP	TEETH
270	0.2	Negative	Wall	C	-	Blue	Deteriorated	Plaster	Bedroom	13	-	-	-
271	0.2	Negative	Wall	D	-	Blue	Deteriorated	Plaster	Bedroom	13	-	-	-
272	0.2	Negative	Ceiling	Ceiling	-	White	Deteriorated	Plaster	Bedroom	13	-	-	-
273	0.1	Negative	Attic Cover	B	-	Blue	Deteriorated	Wood	Bedroom	13	-	-	-
274	0.1	Negative	Attic Cover	D	-	Blue	Deteriorated	Wood	Bedroom	13	-	-	-
275	0	Negative	Baseboard	D	(All)	White	INTACT	Wood	Bedroom	13	-	-	-
276	19.5	Positive	Wall	A	-	Beige	Deteriorated	Wood	Ext. Garage	20	Weather	No	No
277	4.1	Positive	Wall	B	-	Green	Deteriorated	Wood	Ext. Garage	20	Weather	No	No
278	9.6	Positive	Wall	C	-	Green	Deteriorated	Wood	Ext. Garage	20	Weather	No	No
279	1.6	Positive	Wall	D	-	Green	Deteriorated	Wood	Ext. Garage	20	Weather	No	No
280	13.1	Positive	Soffit	All	(All)	Beige	Deteriorated	Wood	Ext. Garage	20	Weather	No	No
281	0.7	Negative	Fascia	All	(All)	Beige	Deteriorated	Wood	Ext. Garage	20	-	-	-
282	15.8	Positive	Corner Board	C	(All)	Beige	Deteriorated	Wood	Ext. Garage	20	Weather	Yes	No
283	0.2	Negative	Door Hardware	A	-	Beige	Deteriorated	Metal	Ext. Garage	20	-	-	-
284	8.8	Positive	Win. Casing	B	-	Beige	Deteriorated	Wood	Ext. Garage	20	Weather	No	No
285	1.8	Positive	Win. Sash Ext.	B	-	Beige	Deteriorated	Wood	Ext. Garage	20	Weather	Yes	No
286	4.4	Positive	Win. Apron	B	-	Beige	Deteriorated	Wood	Ext. Garage	20	Weather	No	No
287	12	Positive	Win. Casing	C	-	Beige	Deteriorated	Wood	Exterior House	21	Weather	No	No
288	13.8	Positive	Win. Sill-Stool	C	-	Beige	Deteriorated	Wood	Exterior House	21	Weather	Yes	No
289	14.6	Positive	Win. Sash Ext.	C	-	Beige	Deteriorated	Wood	Exterior House	21	Weather	Yes	No
290	15.2	Positive	Win. Stop Ext.	C	-	Beige	Deteriorated	Wood	Exterior House	21	Weather	Yes	No
291	17.7	Positive	Win. Jamb	C	-	Beige	Deteriorated	Wood	Exterior House	21	Weather	Yes	No
292	14.5	Positive	Win. Part Bead	C	-	Beige	Deteriorated	Wood	Exterior House	21	Weather	Yes	No
293	14.2	Positive	Win. Well-Trough	C	-	Beige	Deteriorated	Wood	Exterior House	21	Weather	Yes	No
294	0.1	Negative	Win. Casing	B	1	Beige	Deteriorated	Wood	Exterior House	21	-	-	-

READING #	MG/CM ²	RESULT	COMPONENTS	SIDE	SIDE #	COLOR	CONDITION	SUBSTRATE	ROOM TYPE	ROOM #	COND CAUSE	FRIC-IMP	TEETH
295	0	Negative	Win. Mullion	B	1	Beige	Deteriorated	Wood	Exterior House	21	-	-	-
296	0	Negative	Win. Casing	C	1	Beige	Deteriorated	Wood	Exterior House	21	-	-	-
297	0	Negative	Win. Mullion	C	1	Beige	Deteriorated	Wood	Exterior House	21	-	-	-
298	0.3	Negative	Win. Casing	D	3	Beige	Deteriorated	Wood	Exterior House	21	-	-	-
299	0.1	Negative	Door Casing	D	2	Beige	Deteriorated	Wood	Exterior House	21	-	-	-
300	7.8	Positive	Door Casing	D	1	Beige	Deteriorated	Wood	Exterior House	21	Weather	No	No
301	6.3	Positive	Door Casing	A	-	Beige	Deteriorated	Wood	Exterior House	21	Weather	No	No
302	6.6	Positive	Win. Casing	A	1	Beige	Deteriorated	Wood	Exterior House	21	Weather	No	No
303	6	Positive	Win. Sill-Stool	A	1	Beige	Deteriorated	Wood	Exterior House	21	Weather	Yes	No
304	0.6	Negative	Win. Storm-Screen	A	1	Beige	Deteriorated	Wood	Exterior House	21	-	-	-
305	1.8	Positive	Porch Beam	All	(All)	Beige	Deteriorated	Wood	Exterior House	21	Weather	No	No
306	1.1	Positive	Porch Rail	All	(All)	Beige	Deteriorated	Wood	Exterior House	21	Friction	Yes	No
307	7.5	Positive	Porch Ceiling	All	(All)	Beige	Deteriorated	Wood	Exterior House	21	Weather	No	No
308	3.2	Positive	Porch Column	All	(All)	Brown	Deteriorated	Wood	Exterior House	21	Weather	Yes	No
309	8.1	Positive	Porch Trim	All	(All)	Green	Deteriorated	Wood	Exterior House	21	Weather	No	No
310	13.4	Positive	Porch Foundation	D	(All)	Beige	Deteriorated	Wood	Exterior House	21	Weather	Yes	No
311	0.3	Negative	Foundation	A	-	Beige	Deteriorated	Cinderblock	Exterior House	21	-	-	-
312	0.5	Negative	Foundation	D	-	Beige	Deteriorated	Cinderblock	Exterior House	21	-	-	-
313	0.6	Negative	Foundation	C	-	Beige	Deteriorated	Cinderblock	Exterior House	21	-	-	-
314	0.5	Negative	Foundation	B	-	Beige	Deteriorated	Cinderblock	Exterior House	21	-	-	-
315	1.5	Positive	Wall	C	-	Green	INTACT	Transite	Exterior House	21	-	-	-
316	2	Positive	Wall	B	-	Green	INTACT	Transite	Exterior House	21	-	-	-
317	2.1	Positive	Wall	D	-	Green	INTACT	Transite	Exterior House	21	-	-	-
318	2.1	Positive	Wall	A	-	Green	INTACT	Transite	Exterior House	21	-	-	-
319	1	Positive	Coal Door	D	-	Green	Deteriorated	Metal	Exterior House	21	Weather	Yes	No

READING #	MG/CM ²	RESULT	COMPONENTS	SIDE	SIDE #	COLOR	CONDITION	SUBSTRATE	ROOM TYPE	ROOM #	COND CAUSE	FRIC-IMP	TEETH
320	14.8	Positive	Win. Casing	B	(All)	Beige	Deteriorated	Wood	Exterior House	21	Weather	No	No
321	19.2	Positive	Win. Sill-Stool	B	(All)	Beige	Deteriorated	Wood	Exterior House	21	Weather	Yes	No
322	15.4	Positive	Win. Mullion	B	(All)	Beige	Deteriorated	Wood	Exterior House	21	Weather	No	No
323	0.7	Negative	Win. Storm-Screen	B	(All)	Beige	Deteriorated	Wood	Exterior House	21	-	-	-
324	6.9	Positive	Soffit	All	(All)	Beige	Deteriorated	Wood	Exterior House	21	Weather	No	No
325	7.3	Positive	Fascia	All	(All)	Beige	Deteriorated	Wood	Exterior House	21	Weather	No	No
326	17	Positive	Win. Stop Ext.	D	-	Green	Deteriorated	Wood	Exterior House	21	Weather	Yes	No
327	0.5	Negative	Win. Well-Trough	D	-	Green	Deteriorated	Wood	Exterior House	21	-	-	-
328	3	Positive	Win. Sash Ext.	D	-	Green	Deteriorated	Wood	Exterior House	21	Weather	Yes	No
329	0.2	Negative	Pipe	D	-	Green	INTACT	Metal	Exterior House	21	-	-	-
330	1	Positive	Calibrate	-	-	-	-	-	-	-	-	-	-
331	0.9	Negative	Calibrate	-	-	-	-	-	-	-	-	-	-
332	0.8	Negative	Calibrate	-	-	-	-	-	-	-	-	-	-
A1	ASSUMED	Positive	Win. Sash Ext.	A	1	White	Deteriorated	Wood	Living Room	1	Weather	Yes	No
A2	ASSUMED	Positive	Win. Stop Ext.	A	1	White	Deteriorated	Wood	Living Room	1	Weather	Yes	No
A3	ASSUMED	Positive	Win. Jamb	A	1	White	Deteriorated	Wood	Living Room	1	Friction	Yes	No
A4	ASSUMED	Positive	Win. Part Bead	A	1	White	Deteriorated	Wood	Living Room	1	Friction	Yes	No
A5	ASSUMED	Positive	Win. Well-Trough	A	1	White	Deteriorated	Wood	Living Room	1	Weather	Yes	No
A6	ASSUMED	Positive	Win. Sash Ext.	B	1	White	Deteriorated	Wood	Dining Room	2	Weather	Yes	No
A7	ASSUMED	Positive	Win. Stop Ext.	B	1	White	Deteriorated	Wood	Dining Room	2	Weather	Yes	No
A8	ASSUMED	Positive	Win. Jamb	B	1	White	Deteriorated	Wood	Dining Room	2	Friction	Yes	No
A9	ASSUMED	Positive	Win. Part Bead	B	1	White	Deteriorated	Wood	Dining Room	2	Friction	Yes	No
A10	ASSUMED	Positive	Win. Well-Trough	B	1	White	Deteriorated	Wood	Dining Room	2	Weather	Yes	No
A11	ASSUMED	Positive	Win. Sash Ext.	B	2	White	Deteriorated	Wood	Dining Room	2	Weather	Yes	No
A12	ASSUMED	Positive	Win. Stop Ext.	B	2	White	Deteriorated	Wood	Dining Room	2	Weather	Yes	No

READING #	MG/CM ²	RESULT	COMPONENTS	SIDE	SIDE #	COLOR	CONDITION	SUBSTRATE	ROOM TYPE	ROOM #	COND CAUSE	FRIC-IMP	TEETH
A13	ASSUMED	Positive	Win. Jamb	B	2	White	Deteriorated	Wood	Dining Room	2	Friction	Yes	No
A14	ASSUMED	Positive	Win. Part Bead	B	2	White	Deteriorated	Wood	Dining Room	2	Friction	Yes	No
A15	ASSUMED	Positive	Win. Well-Trough	B	2	White	Deteriorated	Wood	Dining Room	2	Weather	Yes	No
A16	ASSUMED	Positive	Win. Sash Ext.	B	3	White	Deteriorated	Wood	Dining Room	2	Weather	Yes	No
A17	ASSUMED	Positive	Win. Stop Ext.	B	3	White	Deteriorated	Wood	Dining Room	2	Weather	Yes	No
A18	ASSUMED	Positive	Win. Jamb	B	3	White	Deteriorated	Wood	Dining Room	2	Friction	Yes	No
A19	ASSUMED	Positive	Win. Part Bead	B	3	White	Deteriorated	Wood	Dining Room	2	Friction	Yes	No
A20	ASSUMED	Positive	Win. Well-Trough	B	3	White	Deteriorated	Wood	Dining Room	2	Weather	Yes	No
A21	ASSUMED	Positive	Win. Sash Ext.	B	1	White	Deteriorated	Wood	Basement	17	Weather	Yes	No
A22	ASSUMED	Positive	Win. Stop Ext.	B	1	White	Deteriorated	Wood	Basement	17	Weather	Yes	No
A23	ASSUMED	Positive	Win. Jamb	B	1	White	Deteriorated	Wood	Basement	17	Friction	Yes	No
A24	ASSUMED	Positive	Win. Part Bead	B	1	White	Deteriorated	Wood	Basement	17	Friction	Yes	No
A25	ASSUMED	Positive	Win. Well-Trough	B	1	White	Deteriorated	Wood	Basement	17	Weather	Yes	No
A26	ASSUMED	Positive	Win. Jamb	D	1	White	Deteriorated	Wood	Basement	17	Friction	Yes	No
A27	ASSUMED	Positive	Win. Well-Trough	D	1	White	Deteriorated	Wood	Basement	17	Weather	Yes	No
A28	ASSUMED	Positive	Win. Sash Ext.	B	1	White	Deteriorated	Wood	Utility Room	18	Weather	Yes	No
A29	ASSUMED	Positive	Win. Stop Ext.	B	1	White	Deteriorated	Wood	Utility Room	18	Weather	Yes	No
A30	ASSUMED	Positive	Win. Jamb	B	1	White	Deteriorated	Wood	Utility Room	18	Friction	Yes	No
A31	ASSUMED	Positive	Win. Part Bead	B	1	White	Deteriorated	Wood	Utility Room	18	Friction	Yes	No
A32	ASSUMED	Positive	Win. Well-Trough	B	1	White	Deteriorated	Wood	Utility Room	18	Weather	Yes	No
A33	ASSUMED	Positive	Win. Casing	B	1	Green	Deteriorated	Wood	Int. Garage	19	Impact	Yes	No
A34	ASSUMED	Positive	Win. Sill-Stool	B	1	Green	Deteriorated	Wood	Int. Garage	19	Impact	Yes	No
A35	ASSUMED	Positive	Win. Stop Int.	B	1	Green	Deteriorated	Wood	Int. Garage	19	Impact	Yes	No
A36	ASSUMED	Positive	Win. Sash Int.	B	1	Green	Deteriorated	Wood	Int. Garage	19	Friction	Yes	No

* HUD reporting limits for positive XRF results are ≥ 1.0 mg/cm² for painted or glazed surfaces.

D-2: XRF Device Used

Viken Pb200i

Viken Detection PCS December 2020

Performance Characteristic Sheet

EFFECTIVE DATE: December 1, 2020

MANUFACTURER AND MODEL:

Make: **Viken Detection** (previously Heuresis)

Models: **Model Pb200i**

Source: **⁵⁷Co, 5 mCi (nominal – new source)**

FIELD OPERATION GUIDANCE

Action Level Setting:

0.5 mg/cm²

OPERATING PARAMETERS:

Action Level mode

XRF CALIBRATION CHECK LIMITS:

0.8 to 1.2 mg/cm² (inclusive) at Action Level setting = 1.0 mg/cm²

SUBSTRATE CORRECTION:

Not applicable

INCONCLUSIVE RANGE OR THRESHOLD:

ACTION LEVEL MODE READING DESCRIPTION	SUBSTRATE	THRESHOLD (mg/cm ²)
Results not corrected for substrate bias on any substrate	Brick	0.4 – 0.6
	Concrete	0.4 – 0.6
	Drywall	0.4 – 0.6
	Metal	0.4 – 0.6
	Plaster	0.4 – 0.6
	Wood	0.4 – 0.6

BACKGROUND INFORMATION

EVALUATION DATA SOURCE AND DATE:

This sheet is supplemental information to be used in conjunction with Chapter 7 of the HUD *Guidelines for the Evaluation and Control of Lead-Based Paint Hazards in Housing*, 2012 Edition ("HUD Guidelines"). Performance parameters shown on this sheet are calculated using test results on building components in the HUD archive. Testing was conducted on 146 test samples in January 2020, with two separate instruments running software version Pb200i 5.0 (DEBUG version) in Action Level test mode. The actual source strength of each instrument on the day of testing was approximately 2.9 mCi; source ages were approximately 9 months.

OPERATING PARAMETERS

Performance parameters shown in this sheet are applicable only when properly operating the instrument using the manufacturer's instructions and procedures described in Chapter 7 of the HUD Guidelines.

XRF CALIBRATION CHECK:

The calibration of the XRF instrument should be checked *with the Action Level set to 1.0 mg/cm²* using the paint film nearest 1.0 mg/cm² in the NIST Standard Reference Material (SRM) used (e.g., for NIST SRM 2579, use the 1.02 mg/cm² film; for NIST SRM 2579a, use the 1.04 mg/cm² film).

If the average (rounded to 1 decimal place) of three readings is outside the acceptable calibration check range, follow the manufacturer's instructions to bring the instrument into control before XRF testing proceeds.

EVALUATING THE QUALITY OF XRF TESTING:

Randomly select ten testing combinations for retesting from each house or from two randomly selected units in multifamily housing.

Conduct XRF re-testing at the ten testing combinations selected for retesting.

Determine if the XRF testing in the units or house passed or failed the test by applying the steps below. Compute the Retest Tolerance Limit by the following steps:

Determine XRF results for the original and retest XRF readings. In single-family and multi-family housing, a result is defined as a single reading. Therefore, there will be ten original and ten retest XRF results for each house or for the two selected units.

Calculate the average of the original XRF result and the retest XRF result for each testing combination.

Square the average for each testing combination.

Add the ten squared averages together. Call this quantity C.

Multiply the number C by 0.0072. Call this quantity D. Add the number 0.032 to D. Call this quantity E.

Take the square root of E. Call this quantity F.

Multiply F by 1.645. The result is the Retest Tolerance Limit.

Compute the average of all ten original XRF readings.

Compute the average of all ten re-test XRF readings.

Find the absolute difference of the two averages.

If the difference is less than the Retest Tolerance Limit, the inspection has passed the retest. If the difference of the overall averages equals or exceeds the Retest Tolerance Limit, this procedure should be repeated with ten new testing combinations. If the difference of the overall averages is equal to or greater than the Retest Tolerance Limit a second time, then the inspection should be considered deficient.

Use of this procedure is estimated to produce a spurious result approximately 1% of the time. That is, results of this procedure will call for further examination when no examination is warranted in approximately 1 out of 100 dwelling units tested.

TESTING TIMES:

The instrument time to take a reading varied within a narrow range from 5 to 6 seconds, with a small number (3%) of longer times from 7 to 11 seconds. The longer readings were almost all on wood substrates. This range of reading times applies only to instruments with the same source strength as those tested (2.9 mCi at the time of PCS testing). Instruments with stronger sources will have shorter reading times and those with weaker sources, longer reading times.

CLASSIFICATION OF RESULTS:

XRF results are classified as **positive** if they are **greater than or equal** to 0.6 mg/cm², **negative** if they are **less than or equal** to 0.4 mg/cm² and **inconclusive** if they are **equal** to 0.5 mg/cm².

DOCUMENTATION:

This XRF Performance Characteristic Sheet (PCS) was developed by QuanTech, Inc., under a contract with the U.S. Department of Housing and Urban Development, Office of Lead Hazard Control and Healthy Homes.

A report titled *Methodology for XRF Performance Characteristic Sheets* (EPA 747-R-95-008) provides an explanation of the statistical methodology used to develop Performance Characteristic Sheets at the Federal standard (Action Level) of 1.0 mg/cm², and provides empirical results from using the recommended inconclusive ranges or thresholds for specific XRF instruments. The report may be downloaded at <http://www2.epa.gov/lead/methodology-xrf-performance-characteristic-sheets-epa-747-r-95-008-september-1997>. The methodology was subsequently generalized by QuanTech for application to other Action Levels.

APPENDIX E – LABORATORIES USED & ORIGINAL LABORATORY ANALYSIS REPORTS

E-1: Laboratories Used

Trace Metals Laboratory used to test dust and soil samples:

ACCURATE Analytical Testing LLC
30105 Beverly Road
Romulus, MI 48174
1-734-629-8161

E-2: Original Laboratory Analysis Reports

All of the original laboratory analysis reports for any samples that were sent for testing are included in the following pages.



30105 Beverly Road
 Romulus, MI 48174
 Ph: 734-629-8161; Fax: 734-629-8431

Certificate of Analysis: Lead In Dust Wipe by EPA Method 7000B/NIOSH 7082*

Client : Environmental Testing and Consulting R
 38900 Huron River Drive
 Romulus, MI 48174

Attn : ETC **Email :** labresults@2etc.com
Phone : 734-955-6600 **Fax :** 734-955-6604

AAT Project : 1030176
Sampling Date : 05/10/2024
Date Received : 05/17/2024
Date Analyzed : 05/21/2024
Date Reported : 05/21/2024

Client Project : 269217

Project Location : 125 Ferguson, Lansing, MI 48912

Lab Sample ID	Client Code	Sample Description	Length (inch)	Width (inch)	Area (Sq ft)	Results Lead µg/ft2 *
9423148	FB1	N/A Field Blank	N/A	N/A	N/A	N/D
9423149	DW01	HF Living Room 1 Floor	12	12	1.00	26.8
9423150	DW02	T Living Room 1 Trough D1	30.5	1.5	0.32	73.5
9423151	DW03	HF Dining Room 2 Floor	12	12	1.00	37.3
9423152	DW04	S Dining Room 2 Sill B1	18	2	0.25	67.2
9423153	DW05	HF Kitchen 3 Floor	12	12	1.00	79.4
9423154	DW06	T Kitchen 3 Trough D1	36.5	1.5	0.38	400
9423155	DW07	CF Bedroom 7 Floor	12	12	1.00	<5.00
9423156	DW08	S Bedroom 7 Sill A1	34.75	3	0.72	34.4
9423157	DW09	CF Bedroom 8 Floor	12	12	1.00	<5.00
9423158	DW10	S Bedroom 8 Sill A1	35.5	3	0.74	27.6
9423159	DW11	T Bedroom 8 Trough A1	32	1.5	0.33	482
9423160	DW12	CF Bedroom 9 Floor	12	12	1.00	30.7
9423161	DW13	S Bedroom 9 Sill C1	35	3	0.73	75.8
9423162	DW14	Porch A A Side	12	12	1.00	171

ND = Not Detected, N/A = Not Available, RL = Reporting Limit, Analytical Reporting Limit is 5 ug/sample. For true values assume (3) significant figures. AAT internal SOP S205. The method and batch QC are acceptable unless otherwise stated. EPA Regulatory Limits: 10 ug/ft2 (Floors, Carpeted/Uncarpeted), 100 ug/ft2 (Window Sill/Stools), 400 ug/ft2 (Window Trough/Well/Ext Concrete Surfaces). HUD Grantee Regulatory Limits: 10 ug/ft2 (Interior Floors), 40 ug/ft2 (Porch Floors), 100 ug/ft2 (Window Sills), 100 ug/ft2 (Window Troughs). The laboratory operates in accord with ISO 17025 guidelines and holds limited scopes of accreditation under AIHA-LAP and NY State DOH ELAP programs. These results are submitted pursuant to AAT, LLC current terms and conditions of sale, including the company's standard warranty and limitation of liability provisions. Analytical results relate to the samples as received by the lab. AAT will not assume any liability or responsibility for the manner in which the results are used or interpreted. All Quality Control requirements for the samples this report contains have been met. AAT does not blank correct reported values. Sample data apply only to items analyzed. Results are calculated with wipe dimensions supplied by client. Reproduction of this document other than in its entirety is not authorized by AAT, LLC. * = Validated modified method. Samples are stored for 15 days following report date.



AIHA LAP- Lab ID #100986, NY State DOH ELAP -Lab ID #11864, State of Ohio- Lab ID # 10042

Date Printed: 05/21/2024

AAT Project: 1030176

Lab Sample ID	Client Code	Sample Description	Length (inch)	Width (inch)	Area (Sq ft)	Results Lead $\mu\text{g}/\text{ft}^2$ *
---------------	-------------	--------------------	---------------	--------------	--------------	--

Analyst Signature

Nathan Ditty

Tom Hamlin

ND = Not Detected, N/A = Not Available, RL = Reporting Limit, Analytical Reporting Limit is 5 ug/sample. For true values assume (3) significant figures. AAT internal SOP S205. The method and batch QC are acceptable unless otherwise stated. EPA Regulatory Limits: 10 ug/ft2 (Floors, Carpeted/Uncarpeted), 100 ug/ft2 (Window Sill/Stools), 400 ug/ft2 (Window Trough/Well/Ext Concrete Surfaces). HUD Grantee Regulatory Limits: 10 ug/ft2 (Interior Floors), 40 ug/ft2 (Porch Floors), 100 ug/ft2 (Window Sills), 100 ug/ft2 (Window Troughs). The laboratory operates in accord with ISO 17025 guidelines and holds limited scopes of accreditation under AIHA-LAP and NY State DOH ELAP programs. These results are submitted pursuant to AAT, LLC current terms and conditions of sale, including the company's standard warranty and limitation of liability provisions. Analytical results relate to the samples as received by the lab. AAT will not assume any liability or responsibility for the manner in which the results are used or interpreted. All Quality Control requirements for the samples this report contains have been met. AAT does not blank correct reported values. Sample data apply only to items analyzed. Results are calculated with wipe dimensions supplied by client. Reproduction of this document other than in its entirety is not authorized by AAT, LLC. * = Validated modified method. Samples are stored for 15 days following report date.



AIHA LAP- Lab ID #100986, NY State DOH ELAP -Lab ID #11864, State of Ohio- Lab ID # 10042

Date Printed: 05/21/2024

AAT Project: 1030176

Sample

Client Code

Analysis Requested

Completed

Analyst

This report is intended for use solely by the individual or entity to which it is addressed. It may contain information that is privileged, confidential and otherwise exempt by law from disclosure. If the reader of this information is not the intended recipient or an employee of its intended recipient, you are herewith notified that any dissemination, distribution or copying of this information is strictly prohibited. If you have received this information in error, please notify AAT immediately. Thank you.

AIHA LAP- Lab ID #100986, NY State DOH ELAP -Lab ID #11864, State of Ohio- Lab ID # 10042

Date Printed: 05/21/2024 2:19PM

AAT Project: 1030176

Submitting Company :

Environmental Testing and Consulting R
 38900 Huron River Drive
 Romulus, MI - 48174

AAT Project : 1030176

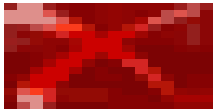
Turn Around: 48 Hours

Project Location: 125 Ferguson, Lansing, MI 48912

Client Job: 269217

Lab Sample	Sample Description	Barcode	Client Code	Sample Type	Dimension	Field Blank	Other Analysis
9423148	N/A Field Blank	1668446	FB1	Dust Wipe	0 x 0	Yes	None
9423149	HF Living Room 1 Floor	1668447	DW01	Dust Wipe	12 x 12	No	None
9423150	T Living Room 1 Trough D1	1668448	DW02	Dust Wipe	30.5 x 1.5	No	None
9423151	HF Dining Room 2 Floor	1668449	DW03	Dust Wipe	12 x 12	No	None
9423152	S Dining Room 2 Sill B1	1668450	DW04	Dust Wipe	18 x 2	No	None
9423153	HF Kitchen 3 Floor	1668451	DW05	Dust Wipe	12 x 12	No	None
9423154	T Kitchen 3 Trough D1	1668452	DW06	Dust Wipe	36.5 x 1.5	No	None
9423155	CF Bedroom 7 Floor	1668453	DW07	Dust Wipe	12 x 12	No	None
9423156	S Bedroom 7 Sill A1	1668454	DW08	Dust Wipe	34.75 x 3	No	None
9423157	CF Bedroom 8 Floor	1668455	DW09	Dust Wipe	12 x 12	No	None
9423158	S Bedroom 8 Sill A1	1668456	DW10	Dust Wipe	35.5 x 3	No	None

Lab Sample	Sample Description	Barcode	Client Code	Sample Type	Dimension	Field Blank	Other Analysis
9423159	T Bedroom 8 Trough A1	1668457	DW11	Dust Wipe	32 x 1.5	No	None
9423160	CF Bedroom 9 Floor	1668458	DW12	Dust Wipe	12 x 12	No	None
9423161	S Bedroom 9 Sill C1	1668459	DW13	Dust Wipe	35 x 3	No	None
9423162	Porch A A Side	1668460	DW14	Dust Wipe	12 x 12	No	None
9423163	dripline A A Side	1668461	SS-1	Lead Soil	0 x 0	No	None
9423164	dripline B B Side	1668462	SS-2	Lead Soil	0 x 0	No	None
9423165	dripline C C Side	1668463	SS-3	Lead Soil	0 x 0	No	None
9423166	dripline Garage Garage	1668464	SS-4	Lead Soil	0 x 0	No	None



Seal Intact: Yes

Preservative (if required): Yes

Containers Labeled : Yes

Sampled By: David Franklin

Received By: Lexus Staffeld

Received Date: 05/17/2024 08:00

Analyst: Tom Hamlin

Relinquished By: Elyse Bidle

Relinquished Date: 05/21/2024 14:19